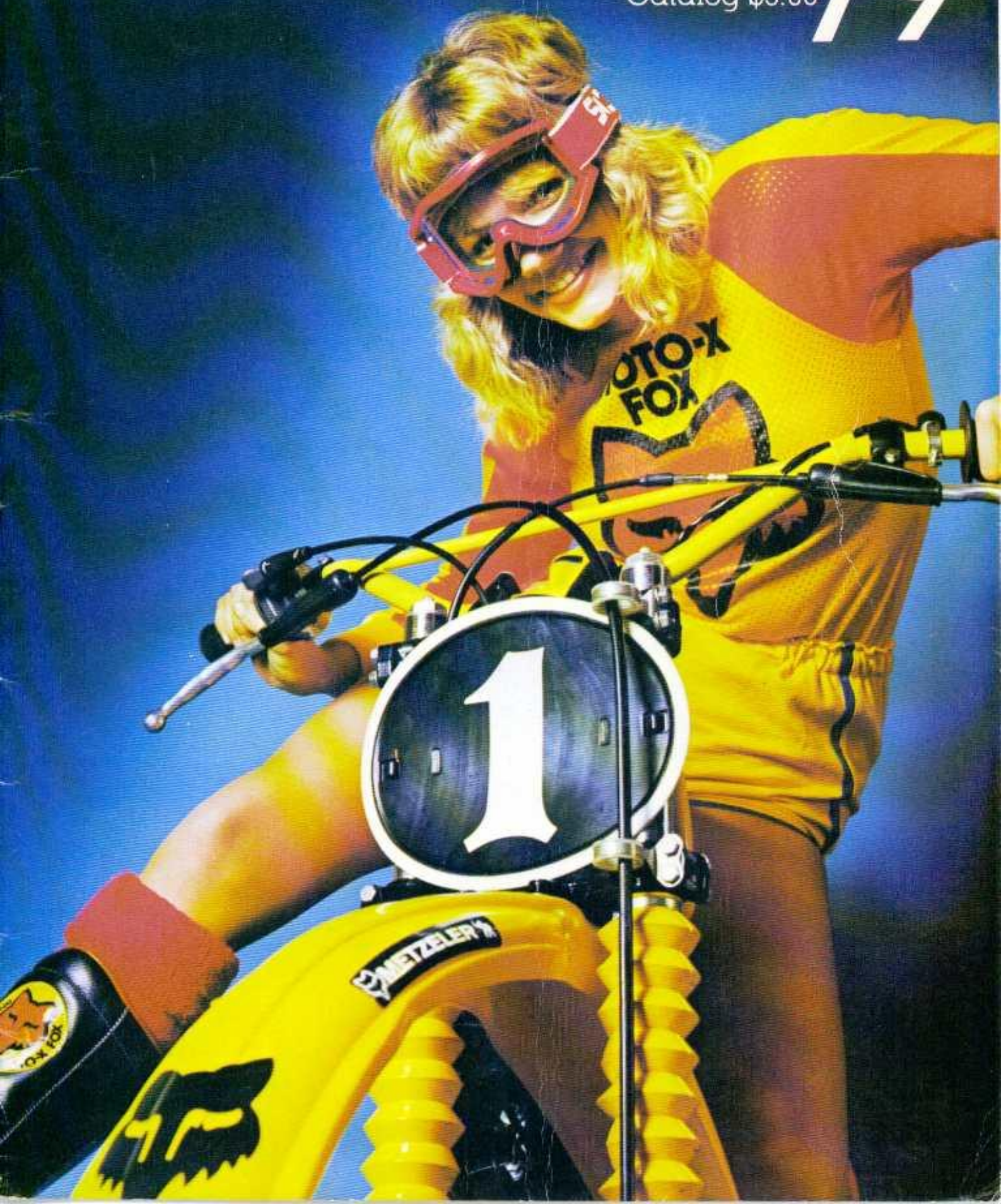


MOTO-X FOX JR 79

Catalog \$3.00





CONTENTS

MOTO-X FOX

INTRODUCTION TO MOTO-X FOX.....	2
FOXY DUDS.....	5
Gloves.....	7
Pants.....	8
Jerseys.....	10
Pants and Caps.....	12
Six Days Jackets.....	13
T-Shirts.....	14
MOTO-X FOX BOOTS AND GOGGLES.....	18
SCOTT BOOTS AND GOGGLES.....	20
JOFA PROTECTION EQUIPMENT.....	22
MOTO-X FOX SUSPENSION.....	24
Fox AirShox.....	26
Fox MonoShox.....	30
Simons Forks.....	31
Fox Shox.....	34

Fox Mini MonoShox.....	35
Fox Shox Springs.....	37
Moto-X Fox Fork Kits.....	38
Moto-X Fox Swingarm Kits.....	40
Chains and Sprockets.....	41
Gas Pressure Guages.....	43
ENGINE PERFORMANCE.....	44
AIR FILTERS.....	48
RIMS AND SPOKES.....	50
TIRES.....	52
HANDLEBARS, GRIPS, LEVERS AND CABLES.....	54
FENDERS, NUMBER PANELS AND NUMBERS.....	57
MOTO-X FOX TUNING MANUALS.....	60
ORDERING INFORMATION.....	62
MINI BIKE PARTS.....	64

MOTO-X JERSEYS



VENTED DOUBLE KNIT AND SUPERFOX

We now offer three types of racing jerseys for you to choose from in various styles and colors. There is the ever popular VENTED NYLON for summer type riding. Then we have our DOUBLE KNIT NYLON jerseys which are perfect for cold weather riding and offer extra protection. Finally we have our new line of SUPERFOX jerseys for 1979. Our

SUPERFOX jerseys are made from a blend of 50% cotton and 50% synthetic fabric and are very light in weight. The cotton makes these jerseys extremely comfortable to wear. It also provides a wicking action to help perspiration evaporate from your body more readily, keeping you cooler in the hottest competition. The SUPERFOX jersey is not just for racing either; you can wear your SUPERFOX jersey to school, in the pits or at work. Available with custom lettering for \$1.00 per letter and \$2.00 per number, it's the ideal shirt to show everyone your true colors!



T-SHIRTS

MOTO-X FOX SPORT SHIRTS \$13.50

16-1050	Small	16-1051	Medium
16-1052	Large	16-1053	Extra Large

MOTO-X FOX LADIES T-SHIRT \$6.50

16-0060	Small	16-0061	Medium
16-0062	Large		

TEAM MOTO-X FOX T-SHIRT \$6.50

16-0030	Small	16-0031	Medium
16-0032	Large	16-0033	Extra Large

FOX FACTORY T-SHIRT \$6.50

16-0040	Small	16-0041	Medium
16-0042	Large	16-0043	Extra Large



Vented Nylon: \$15.95

	S	M	L	XL
MOTO-X FOX	04-0061	04-0062	04-0063	04-0064
SUZUKI	04-1051	04-1052	04-1053	04-1054
YAMAHA (white)	04-1041	04-1042	04-1043	04-1044
YAMAHA (yellow)	04-1081	04-1082	04-1083	04-1084
HONDA	04-1031	04-1032	04-1033	04-1034

Double Knit Nylon: \$20.95

	S	M	L	XL
MOTO-X FOX	04-0066	04-0067	04-0068	04-0069
SUZUKI	04-1055	04-1056	04-1057	04-1058
YAMAHA (white)	04-1045	04-1046	04-1047	04-1048
YAMAHA (yellow)	04-1091	04-1092	04-1093	04-1094
HONDA	04-1036	04-1037	04-1038	04-1039

SUPERFOX : \$12.95

	S	M	L	XL
MOTO-X FOX	04-2030	04-2031	04-2032	04-2033
SUZUKI	04-2040	04-2041	04-2042	04-2043
YAMAHA	04-2050	04-2051	04-2052	04-2053
HONDA	04-2060	04-2061	04-2062	04-2063
MAICO	04-2070	04-2071	04-2072	04-2073
HUSQVARNA	04-2080	04-2081	04-2082	04-2083
KTM	04-2090	04-2091	04-2092	04-2093
KAWASAKI	04-2100	04-2101	04-2102	04-2103

YOUTH SUPERFOX : \$12.95

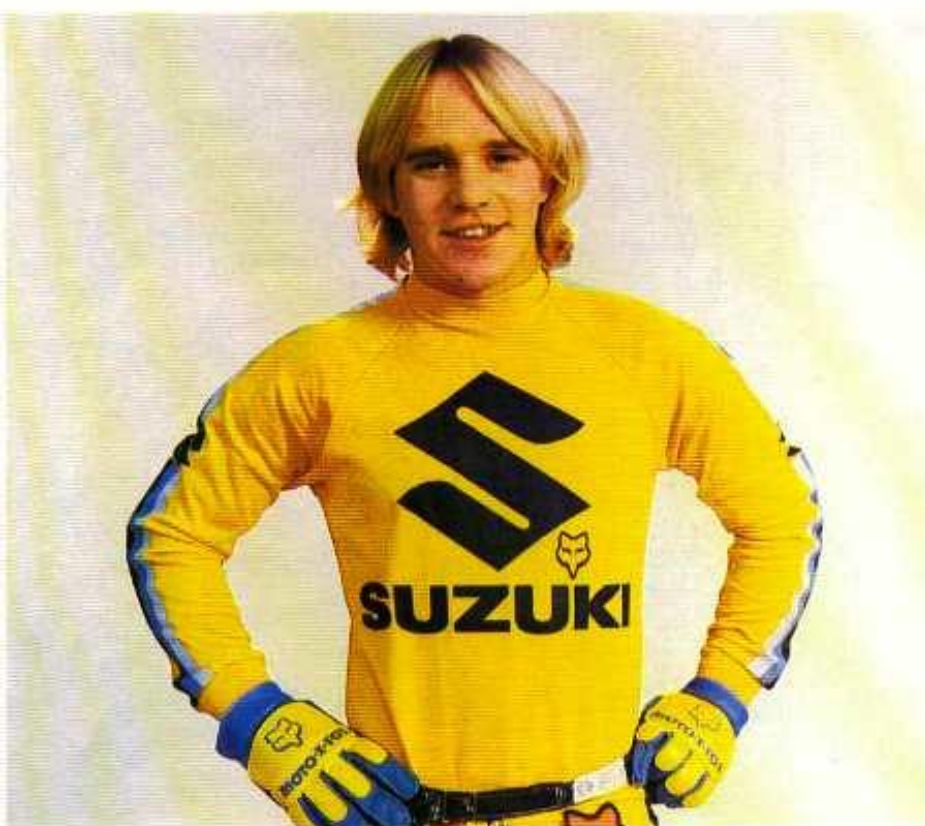
	S	M	L
MOTO-X FOX	04-2900	04-2901	04-2902
SUZUKI	04-2910	04-2911	04-2912
YAMAHA	04-2920	04-2921	04-2922
HONDA	04-2930	04-2931	04-2932
KAWASAKI	04-2940	04-2941	04-2942



HELMETS

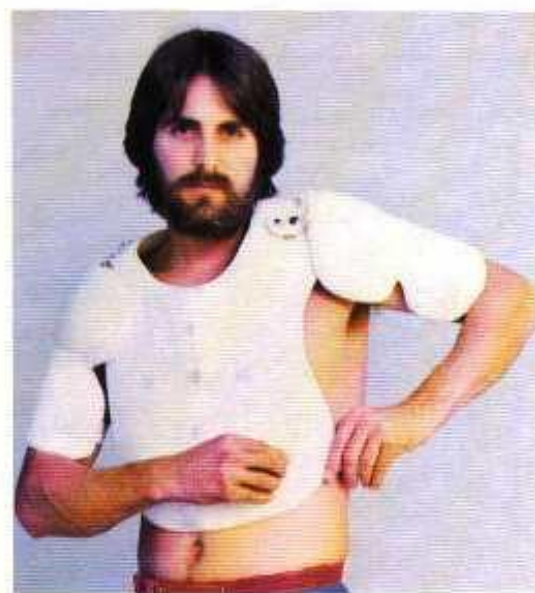
Our team helmet in red, yellow and orange with the FOX logo on top in black. Snell '75 approval is the best you can get. Made for us by KRW.
Price \$79.50

04-0080	Small,B, 6 $\frac{1}{4}$ -6 $\frac{1}{2}$
04-0081	Medium,C, 7-7 $\frac{1}{4}$
04-0082	Large,D, 7 $\frac{1}{4}$ -7 $\frac{3}{4}$
04-0083	XLarge,E, 7 $\frac{1}{2}$ -7 $\frac{3}{4}$

**CHEST PROTECTOR**

18-1072 Chest Protector

\$29.95



GRAND PRIX PANTS



YOKO GRAND PRIX PANTS

More Grand Prix and Trans-AMA riders wear YOKO/MOTO-X FOX pants than any other brand. Stars like Brad Lackey, Mark Barnett, Rex Staten, Herbert Schmitz, Guennedy Moissev and Jaroslav Falta all choose these world famous racing pants for their safety and comfort. That's why they're the Pro's choice.

Just a few of the features on these tough Grand Prix pants include leather in the important seat and knee areas to resist wear and offer maximum control of the bike. Outside the pants are constructed of heavy-duty nylon fabric that can "breathe," while inside they have a lightweight nylon liner to keep you cool and comfortable in the hottest of competition. The legs are zipperless so mud can't harm them. And of course they come with slip-in professional knee and shin guards.

	30"	32"	34"	36"	Price
MOTO-X FOX	25-2010	25-2011	25-2012	25-2013	\$115.00
HONDA	25-2070	25-2071	25-2072	25-2073	115.00
SUZUKI	25-2080	25-2081	25-2082	25-2083	115.00
YAMAHA	25-2090	25-2091	25-2092	25-2093	115.00
Red/Yellow/Black	25-2020	25-2021	25-2022	25-2023	95.00
Blue/Yellow	25-2030	25-2031	25-2032	25-2033	95.00
Yellow/Black/White	25-2040	25-2041	25-2042	25-2043	95.00
Red/White/Blue	25-2050	25-2051	25-2052	25-2053	95.00
Red/Yellow	25-2060	25-2061	25-2062	25-2063	95.00

CAPS

Colorful MOTO-X FOX team hats are the only thing to wear on your head when you're not wearing a helmet! The FOX patch is sewn to the front of each. One size fits even riders with the biggest egos.

17-0010	MOTO-X FOX hat with visor	\$5.95
17-0011	MOTO-X FOX wool stocking cap	5.95
17-0012	MOTO-X FOX vented hat with visor	5.95





SIX DAYS JACKETS

These super tough ISDT jackets are made for us by Griffs to the same exacting specifications as the Griffs jackets worn by the American Trophy Team at the Six Days. Thick Denier nylon provides the ultimate in protection and warmth for cold weather riding or race watching. Lots of big pockets have the carrying capacity for enough parts and tools for a major rebuild of your bike out on the trail. Price: \$85.00.

ISDT Jacket	Small	Medium
MOTO-X FOX	16-1060	16-1061
HONDA	16-1081	16-1082
YAMAHA	16-1071	16-1072
SUZUKI	16-1091	16-1092
TEAM USA	16-1101	16-1102





TEAM MOTO-X FOX T-SHIRTS

Be the envy of everyone at the next school prom when you show up in the new TEAM MOTO-X FOX shirt instead of a tuxedo! The AMA officials at Flatbed Motocross Raceway will be pale white in comparison to you in the official orange/yellow/red TEAM MOTO-X FOX colors as you strut your way into the winner's circle to collect the trophy girl's kiss.

Price: \$6.95

16-0030	Small	16-0031	Medium
16-0032	Large	16-0033	Extra Large

MOTO-X FOX T-SHIRT

Our regular MOTO-X FOX T-shirt in yellow with the orange and black FOX logo on the front. Price: \$5.95 Each.

16-0010	Small	16-0012	Large
16-0011	Medium	16-0013	XLarge

A combination shirt, MOTO-X FOX logo on the front and FOX FACTORY logo on the rear. Price \$6.50
In children's sizes. Price \$5.95

16-0050	Small	16-0052	Large
16-0051	Medium	16-0053	XLarge

FOX FACTORY T-SHIRTS

FOX FACTORY INC. is the manufacturing side of MOTO-X FOX where all the trick parts are born. The new black and red logo on a thick cotton shirt is worth getting into. Price: \$6.50

16-0040	Small	16-0041	Medium
16-0042	Large	16-0043	Extra large

BRAD LACKEY T-SHIRTS

Here's an absolutely wild and colorful T-shirt featuring our own "Bad Brad" Lackey, America's fastest rider in 500cc World Championship motocross. Brad gets a percentage of every shirt we sell, so help us keep him in the high tax bracket by ordering yours today. Price: \$6.95

16-0020	Small	16-0021	Medium
16-0022	Large	16-0023	Extra large

REX STATEN T-SHIRT

Get radical with our new Rocket Rex T-shirt. Price: \$6.95

		16-0112	Large
16-0110	Small	16-0111	Medium
		16-0113	XLarge



MOTO-X FOX SPORT SHIRTS

This dressy bright yellow MOTO-X FOX shirt is just the thing when a T-shirt is too informal. Perfect for going to a Supercross race, hanging out at the local disco or wearing to school. Price: \$13.50

16-1050	Small	16-1051	Medium
16-1052	Large	16-1053	Extra large

MARK BARNETT T-SHIRT

The new Mark Barnett T-Shirt from MOTO-X FOX. Price: \$6.95

				16-0102	Large
16-0100	Small	16-0101	Medium	16-0103	XLarge

MOTO-X FOX LADIES T-SHIRT

A wide neck MOTO-X FOX T-shirt for ladies. Price: \$6.50

16-0060	Small	16-0061	Medium	16-0062	Large
---------	-------	---------	--------	---------	-------

A wide neck FOX FACTORY T-shirt for ladies. Price: \$6.50

16-0070	Small	16-0071	Medium	16-0072	Large
---------	-------	---------	--------	---------	-------

What better way for your motocross fox to support racing than letting us support her with the MOTO-X FOX halter top.

16-0015	Medium halter top	\$5.95
---------	-------------------	--------

CHILD

A combination shirt. MOTO-X FOX logo on the front and FOX FACTORY logo on the rear.

In children's sizes. Price \$5.95

16-0056	Small	16-0057	Medium	16-0058	Large
---------	-------	---------	--------	---------	-------

MOTO-X FOX JACKETS

The best way to show you're part of the MOTO-X FOX team is with an official TEAM MOTO-X FOX jacket. Made of lightweight and tough nylon in the three MOTO-X FOX colors with knitted cuffs, these jackets are available as a lightweight summer windbraker or a thick lined winter jacket.

LINED JACKET

16-1030	Small	\$39.95
16-1031	Medium	39.95
16-1032	Large	39.95
16-1033	XLarge	39.95

WINDBRAKER

16-1040	Small	\$27.50
16-1041	Medium	27.50
16-1042	Large	27.50
16-1043	XLarge	27.50





GOLD BELT

GOLD BELTS

The genuine original GOLD BELT is now available in three sizes. This is the kidney belt which uses "Velcro" fasteners for a superior fit and ease of use. The GOLD BELT has been used by more professional motocrossers than any other brand. Get the best... get a genuine GOLD BELT.

15-1000	"Old Gold Belt" fits 27" to 40" waist	\$17.95
15-1001	"Dynamite" Gold Belt narrower, 25" to 36"	12.95
15-1002	"Skinny Mini" smallest, 18" to 24"	11.95
15-1003	"Gold Belt Enduro Bag"	4.95

The Gold Belt is now available in factory matching colors. The same great quality as always, but now you can match your race team's colors. Only available in the full size belt however.

15-1011	Gold Belt, Red with Yellow stays	\$17.95
15-1012	Gold Belt, Blue with Yellow stays	17.95
15-1013	Gold Belt, Blue with Black stays	17.95

15-1014	Gold Belt, Red with Black stays	17.95
15-1015	Gold Belt, Yellow with Black stays	17.95
15-1016	Gold Belt, Professional model	19.95

WINNERS

Winners are a revolutionary new design in action support underwear from the makers of the world famous Gold Belt. Made of 100% machine washable cotton, Winners give you support and comfort without binding, creeping or chafing. If you've seen the Europeans like DeCoster and Mikkola you know that this is what they wear under their racing pants. Now on those hot days you don't have to be embarrassed between motos, just strip off your pants, cool off and let the fans know that you are a winner too.

Price: \$4.95

Size	Color	Beige	Brown	Red	Lt. Blue	Navy
S (28-30)	03-2001	03-2002	03-2003	03-2004	03-2005	
M (32-34)	03-2011	03-2012	03-2013	03-2014	03-2015	
L (36-38)	03-2021	03-2022	03-2023	03-2024	03-2025	

BELT BUCKLE

A high quality 100% brass belt buckle featuring our famous logo. What better way to hold your pants up? Price \$14.95 17-0013 MOTO-X FOX Brass Belt Buckle



GEAR, HELMET, BOOT, GARMENT BAGS

Super looking nylon bags to carry your helmet, gloves, pants, sox, shoulder pads, boots and other gear and now available from MOTO-X FOX. Each includes the famous FOX logo and orange, yellow and red color scheme on quality nylon material. Just like Pat Richter and Steve Wise use. Many sizes so you can get just what you need.

02-0100	MOTO-X FOX Gear Bag 10" x 15"	\$14.25
02-0101	MOTO-X FOX Gear Bag 12" x 22"	19.25
02-0102	MOTO-X FOX Gear Bag 12" x 30"	21.25
02-0103	MOTO-X FOX Helmet Bag-single	12.25
02-0104	MOTO-X FOX Helmet Bag-double	14.25
02-0105	MOTO-X FOX Boot Bag	16.95
02-0106	MOTO-X FOX Garment Bag	24.25

MX FOX HELMETS, VISORS

Our team helmet in red, yellow and orange with the FOX logo on top in black. Snell '75 approval is the best you can get. Made for us by KRW.

Price \$79.50

04-0080	Small, B, 5 5/8-6 3/4	04-0082	Large, D, 7 1/4-7 3/4
04-0081	Medium, C, 7-7 1/4	04-0083	XLarge, E, 7 3/4-7 7/8

Our motocross peak visors are among the most popular around. Now available in both 3-snap and 5-snap versions. The 5-snap version includes the MOTO-X FOX lettering right on the visor in a contrasting color.

09-3001	3-Snap	Smoke	\$1.70
09-3002	3-Snap	Yellow	1.70
09-3003	3-Snap	Red	1.70
09-3004	3-Snap	Blue	1.70
09-3005	3-Snap	White	1.70
09-4001	5-Snap	Red w/yellow lettering	3.95
09-4002	5-Snap	Blue w/yellow lettering	3.95
09-4003	5-Snap	Smoke w/yellow lettering	3.95
09-4004	5-Snap	Yellow w/red lettering	3.95
09-4005	5-Snap	White w/red lettering	3.95

STICKERS

17-0000	MOTO-X FOX head, 4 1/2 ins. high, orange	\$.25
17-0002	MOTO-X FOX head, 4 1/2 ins. high, yellow	.25
17-0001	MOTO-X FOX head, 14 ins. high, orange	2.95
17-0007	Assorted stickie kit	3.00
17-0027	FOX FILTER	.35
17-0100	FOX FACTORY, small	.35
17-0101	FOX FACTORY, large	1.95
99-0060	FOX AIRSHOX	.50
99-8000	FOX MONO AIRSHOCK	.75
17-0025	BOSCH	.25
17-0023	METZELER	.25
17-0022	POLY-AIR, small	.25
17-0039	POLY-AIR, large	1.50
17-0020	SCOTT USA	.25
17-0026	SPECTRO	.35
17-0024	Team YOKO	.25
17-0029	SIMONS	.25
17-0030	MOTO-X FOX visor type, Yellow	.50
17-0031	MOTO-X FOX visor type, Red	.50
17-0032	MOTO-X FOX visor type, Blue	.50
17-0033	MOTO-X FOX visor type, Black	.50
17-0034	MOTO-X FOX visor type, White	.50
17-0035	BIG FOX HEAD, Black	2.00
17-0036	BIG FOX HEAD, Red	2.00
17-0037	BIG FOX HEAD, Orange	2.00
17-0038	BIG FOX HEAD, Yellow	2.00

PATCHES

17-0200	FOX FACTORY, Yellow	\$1.95
17-0201	FOX FACTORY, Blue	1.95
17-0005	MOTO-X FOX, Orange	1.95
17-0006	MOTO-X FOX, Yellow	1.95
17-0202	POLY-AIR	1.95
17-0021	SCOTT USA	1.95

DELUXE STICKER KIT: A great collection of popular stickers. 17-0007 \$3.00



MOTO-X FOX BOOTS



MOTO-X FOX now has available its own boot design crafted by one of the world's top boot manufacturers. Features on the exclusive FOX boot include a smooth and seamless outer surface to eliminate the danger of snagging and tearing. Vital areas like the shin and ankles are well padded. There's a steel arch support inside, while outside a steel toe cap allows these boots to survive the worst berm dragging you could possibly put them through. A new positive buckle design insures the FOX boot won't come loose when you don't want it to. Price: \$89.50 per pair.

MX Sole			Enduro Sole
06-0060	MOTO-X FOX Boot	size 6	06-0040
06-0070	MOTO-X FOX Boot	size 7	06-0041
06-0080	MOTO-X FOX Boot	size 8	06-0042
06-0085	MOTO-X FOX Boot	size 8½	06-0043
06-0090	MOTO-X FOX Boot	size 9	06-0044
06-0095	MOTO-X FOX Boot	size 9½	06-0045
06-0100	MOTO-X FOX Boot	size 10	06-0046
06-0105	MOTO-X FOX Boot	size 10½	06-0047
06-0110	MOTO-X FOX Boot	size 11	06-0048
06-0120	MOTO-X FOX Boot	size 12	06-0049
06-0130	MOTO-X FOX Boot	size 13	06-0050

MOTO-X FOX SOCKS

You may not be able to fill Brad Lackey's, Rex Staten's or Mark Marnett's boots yet, but you can fill your own boots with the socks these MOTO-X FOX riders wear. FOX socks are the long kneeprotective type made of 85% orlon and 15% nylon for comfort and durability. Available in three superbright colors. One size fits all adults. Price: \$4.95 a pair.

10-1025 Red 11-1025 Gold 14-1025 Blue

FOX GOGGLES

New FOX GOGGLES are manufactured for us by one of the country's top goggle manufacturers. Styled in TEAM MOTO-X FOX colors these goggles offer you top performance at a realistic price.

20-0010	FOX GOGGLE, Adult	\$14.50
20-0011	Lens for FOX GOGGLE, clear (dealers order x6)	1.25
20-0012	Lens for FOX GOGGLE, yellow (dealers order x6)	1.25
20-0013	Lens for FOX GOGGLE, smoke (dealers order x6)	1.25
20-0014	Lens for FOX GOGGLE, polar (dealers order x6)	4.25
20-0015	Lens for FOX GOGGLE, tear-offs (dealers order x6)	1.00
20-0018	FOX GOGGLE, childrens	6.75
20-0019	Lens for child's FOX GOGGLE, clear (dealers order x6)	1.25



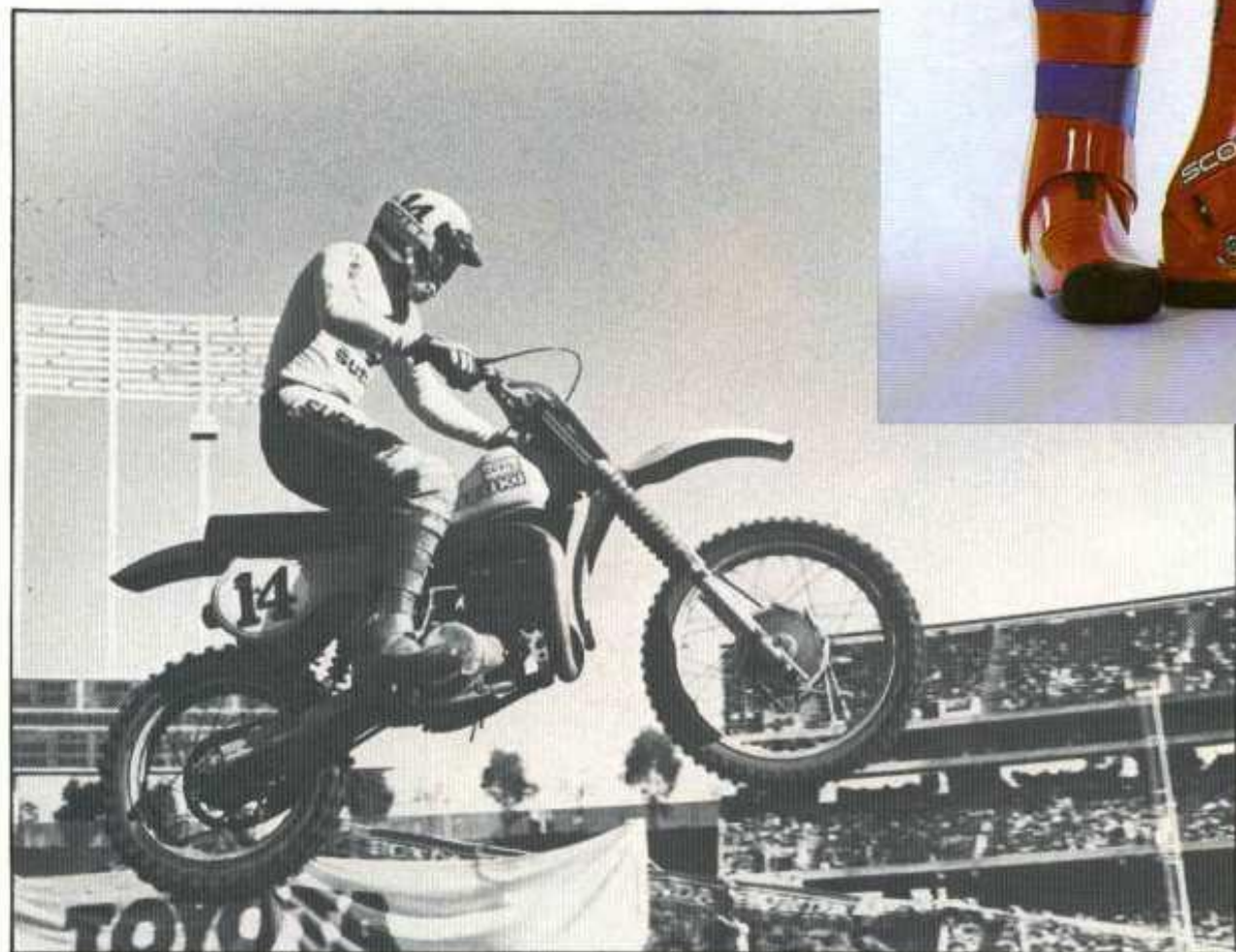


INTRODUCTION TO MOTO-X FOX

The top guys at Moto-X Fox and Fox Factory include, from left to right: Mark Jones, production and design; Bob Fox, owner of Fox Factory; Geoffrey Fox, owner of Moto-X Fox; Bob McBroom, design and engineering; and Steve Carter, racing services technician.



SCOTT BOOTS



The Scott plastic boot, the most revolutionary boot in motocross is now available after three years of extensive development. Tested and used by the top riders in racing, among them Bob Hannah, Marty Trips and Danny LaPorte, the Scott boot offers more safety and protection than any conventional leather boot possibly can. Yet the Scott boot is still able to retain the comfort, mobility and feel that riders like Bob Hannah demand.

Features of the Scott boot include construction from three different types of plastic to offer the proper amount of support and protection in areas like the shin plate and sides where needed, and flexibility in other areas like the top of foot. The lower portion of the boot can pivot in every direction thanks to a special hinge, but built-in stops assure the foot will not rotate so far as to cause injury. The sole of the boot is made of special non-skid rubber for good grip on slippery foot pegs. Replacement parts are available from Scott U.S.A. when parts on the boot might become worn or damaged.

When ordering Scott boots, retail customers need only to tell us what size you want and MOTO-X FOX will supply you with the correct shell and liner kit together. Price: \$180.00 per pair, complete.

DEALER ORDERING INFORMATION:

- 06-1000 MEDIUM Scott Boot Shell
(for liners sizes 7-10)
- 06-2000 LARGE Scott Boot Shell
(for liners sizes 11-13)
- 06-3007 Liner, size 7
- 06-3008 Liner, size 8
- 06-3009 Liner, size 9
- 06-3010 Liner, size 10
- 06-3011 Liner, size 11
- 06-3012 Liner, size 12
- 06-3013 Liner, size 13
- 06-1001 MEDIUM Fit Kit
(18 pair liners:
2x7, 3x8, 6x9, 7x10)
- 06-2001 LARGE Fit Kit
(18 pair liners:
10x11, 6x12, 2x13)

SCOTT GOGGLES

Scott goggles offer the utmost in eye and face protection demanded by the top stars in motocross today. Pros like Yamaha National Champions Broc Glover, Bob Hannah and Rick Burgett use Scott goggles exclusively.

NEW SCOTT GOGGLES: Offering improved face fit and better vision with a new design. Available in two goggle colors, both with LEXAN clear safety lens.

61-9200	Scott Goggle, RED frame	\$15.95
61-9900	Scott Goggle, YELLOW frame	15.95
69-5008	Replacement lens, clear, LEXAN	2.00

REGULAR SCOTT GOGGLES: The goggles used by more riders than any other brand. These use latest post style mount system for even better results.

20-1095	Goggle (clear lens/bl frame)	\$13.95
23-1095	Goggle (clear lens/wh frame)	13.95
24-1095	Goggle (clear lens/or frame)	13.95
21-1095	Goggle (polar lens/bl frame)	17.95
22-1095	Goggle over glasses model	17.95

SCOTT U.S.A. T-SHIRT

The official Scott U.S.A. T-shirt. Price: \$6.50

16-0080	Small	16-0081	Medium
16-0082	Large	16-0083	XLarge

FACE MASKS:

20-1097	White	\$6.95
21-1097	Yellow	6.95
25-1097	Foam Filter for Mask (3 pack)	1.00
24-1097	Orange	6.95
22-1097	Blue	6.95
23-1097	Red	6.95

REPLACEMENT LENSES:

20-1098	Clear lens retaining clips	\$1.00
21-1098	Yellow lens retaining clips	1.00
22-1098	Green lens retaining clips	1.00
26-1098	Tearoff lenses (pkg. of six)	1.95
25-1098	Polar lens, dark with clips	3.95
24-1098	Polar lens, rose without clips	4.95
20-0001	Clear lens (new post style)	1.00
20-0002	Yellow lens (new post style)	1.00
20-0003	Smoke lens (new post style)	1.00
20-0004	Polar lens (new post style)	3.95
20-0005	Polar rose lens (new post style)	3.95

SCOTT STICKIES

17-0020	Scott Goggle Stickers	.25 each
17-0050	SCOTT USA visor type, Yellow	.50
17-0051	SCOTT USA visor type, Red	.50
17-0052	SCOTT USA visor type, Black	.50
17-0053	SCOTT USA visor type, White	.50
17-0021	Scott Sew On Patch	\$1.95 each



JOFA RACING EQUIPMENT

One of the world's top leaders in protective equipment for racing and riding is JOFA of Sweden. More top riders look to JOFA for the safety provided by their famous shoulder pads, knee guards and other equipment than any other brand. MOTO-X FOX is happy to include JOFA in its lineup of the most durable and stylish racing and riding apparel ever offered before.



SHIN GUARDS

19-0101	child's size	\$10.95
19-0104	adult size	14.95
19-0108	pro—see Ellis photo	18.95

ELBOW PADS

19-0404	childs	\$ 9.95
19-0406	adult	14.95

SHOULDER PADS

19-0307	"Marty Smith" child's miniature version	\$27.95
19-0318	Marty Smith model	44.95
19-0333	Jimmy Ellis model	46.95
19-0347	Dick Burleson model	39.95
19-0327	Exterior model	29.95



MOUTH GUARDS

19-1889	White	\$4.20
19-2889	Blue	4.20
19-3889	Yellow	4.20
19-4889	Red	4.20
19-5889	Green	4.20

HELMETS

Now a quality open face helmet is available from JOFA, the Protection People. Snell '75 approved (the best there is). Available in three colors. (The visor must be ordered separately.)

19-0001	Small	Silver	\$69.00
19-0002	Medium	Silver	69.00
19-0003	Large	Silver	69.00
19-0004	XLarge	Silver	69.00
19-0011	Small	White	65.00
19-0012	Medium	White	65.00
19-0013	Large	White	65.00
19-0014	XLarge	White	65.00
19-0021	Small	Black	65.00
19-0022	Medium	Black	65.00
19-0023	Large	Black	65.00
19-0024	XLarge	Black	65.00

T-SHIRTS

The new JOFA T-shirt is really trick. A white shirt with five color artwork.

25-2000	Small	\$5.95
25-2001	Medium	5.95
25-2002	Large	5.95
25-2003	XLarge	5.95

JOFA PIT HAT

25-1999	One size fits all	\$6.75
---------	-------------------	--------

JOFA GEAR BAG

19-0915	For your riding gear	\$ 29.95
---------	----------------------	----------



MOTO-X FOX SUSPENSION



YOUR NEW BIKE AND THE FOX FACTORY PHILOSOPHY

The '79 production bikes from Japan and Europe offer a level of performance and technology unimagined just 2 or 3 years ago. For sale to the general public, these bikes are literally better than the megabuck, one-of-a-kind factory racers used by the best riders in the world to campaign the World Championships just a year or two ago!

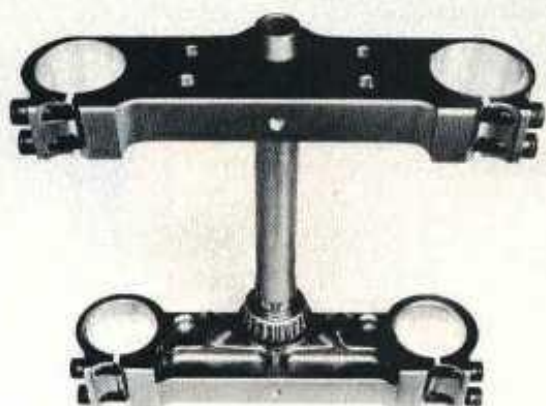
As good as the new bikes are, some riders wish to make them even better. They know it won't be as easy as it used to be. And they know that, for many riders, the capabilities of the bike already exceed the capabilities of the rider.

But, for the rider who demands a machine that can give him a "winning edge" over all the other similar machines on the line, for the rider who demands an even closer embodiment of the theoretically attainable ideal, improvements can be made!

But they don't come easy. And some of them don't come cheap. The days of backyard-engineered products that can offer improved performance are probably gone forever. Most stock production parts are already too good for that. The only way to improve many of the production parts now is to launch a major engineering and testing program. And to insist on a no-compromise design philosophy, regardless of cost.

FOX FACTORY, headed by Fox Airshox designer Bob Fox, believes in the no-compromise design philosophy. We believe in the pursuit of engineering excellence. We believe in computer-aided theoretical analysis backed-up by test riding with some of the best riders in the world. We believe in the latest sophisticated manufacturing techniques for close tolerances and unrelenting quality.

FOX FACTORY's goal is to design, engineer and manufacture the finest products in the world for motocross. Products that can give you the "winning edge."



MOTO-X FOX AND THE NEW TECHNOLOGY

The 1979 racing season in Europe and America will once again see FOX FACTORY and MOTO-X FOX in the technical advancement of motocross suspension systems. Our well-earned reputation for engineering excellence and our rapid growth in the motocross and off-road motorcycling market has allowed us to continue to develop, test, race and sell the finest components in racing possible.

Three of MOTO-X FOX's newest products, pictured here on Jim Turner's CR-250R2 production Honda, tuned by Keith Bontrager and prepared for the 250cc World Motocross Championships, are the FOX FACTORY SWINGARM, the FOX FACTORY SHOCKS and FOX FACTORY FORKS. These components were developed to fit the most technically advanced production and factory works bikes in the world. Beginning with the FOX FACTORY FORKS, all three items will be available for sale within weeks of the publication of this catalogue.

The FOX FACTORY SWINGARM will set new standards in the industry for strength, performance and light weight. It is built up of welded aircraft-quality 6061 extruded aluminum alloy heat-treated after assembly to T-6 to offer the strongest and most



rigid swingarm assembly ever seen. Straight line tracking ability will be unequalled by any other swingarm, while rear wheel travel can be set for 12 or 13 inches depending upon choice of shock absorber length.

The FOX FACTORY SHOCKS with remote or piggyback reservoirs will set new standards in their field for performance, tunability, reliability and ease of maintenance. Introduced as an alternative to the famous FOX AIRSHOX, the ultimate in high performance motocross rear suspension, the FOX FACTORY SHOCKS offer the pro-caliber rider a suspension unit which needs only to be dialed-in once and then left alone.

FOX FACTORY FORKS

For the first time in motocross history the privateer is being offered a front fork assembly which is better than any prototype fork assembly being used by the major factory teams on their exotic multi-thousand dollar works bikes. What is even more amazing is that the new FOX FACTORY FORKS are available at a price the privateer can afford to upgrade his suspension to the ultimate.

But what the FOX FACTORY FORKS are really all about is performance. Performance and design so fantastic, the specifications alone speak for themselves:

- The strongest forks ever built. Large-diameter 44mm legs of specially heat-treated lightweight thin-wall tubing have less flex, more strength than any fork tubes ever built.

- The first-ever **forged** aluminum slider legs for maximum strength over conventional cast parts. The triple clamps are also forged and are tape milled for precision tolerances and light weight.

- A computer-generated tapered dampening rod design incorporating a unique rebound relief valve never before offered in any production fork.

- Forks use combination gas/coil spring suspension with three (3) optional main springs and three (3) optional negative springs to allow tuning the forks to every condition possible.

- Available in standard length 12 inches of travel. Optional dampening rods available for either 11 inches or 13 inches of travel, allowing you to match your present rear travel or build a bike that has more suspension travel than the latest factory bikes.

The racing record of these new FOX FACTORY FORKS throughout the 1979 season will stand alone as the one reason why they are the world's best forks. But all you really need to know is that they were designed and built with the same quality and engineering that has made MOTO-X FOX world famous in the sport of motocross. **FOX FACTORY FORKS: \$439.00 complete.**

94-1000 FOX FACTORY FORKS, Honda CR-125R
 94-1001 FOX FACTORY FORKS, Honda CR-250R, R2
 94-1002 FOX FACTORY FORKS, Suzuki RM-125/250/400N
 94-1003 FOX FACTORY FORKS,
 Yamaha YZ-125/250/400D, E, F

Other models available soon. Please inquire.



FOX AIRSHOX

MOTO-X FOX has become the world leader in suspension technology for motocross racing and other forms of off-road motorcycle competition. What has earned us our reputation more than any one item is now famous FOX AIRSHOX. No other rear suspension unit can match the AIRSHOX for its many advantages which include the utmost in reliability and performance.

The unique dual-stage adjustable air spring rates of the AIRSHOX allows it to be tuned instantly for any bike, rider or track condition. Additionally, the AIRSHOX is easily rebuildable by any owner for tuning of the dampening and air spring progression rates, as well as replacement of parts which might become worn. Breakage of an AIRSHOX is next to impossible.

No other rear suspension unit can stand up to the rigors of long travel rear suspension like the AIRSHOX. For this reason alone the AIRSHOX has been used by every major factory team in motocross at one time or another.

In nearly every case World Championship riders like Brad Lackey and Chuck Sun to National stars like Marty Tripes and Marty Smith have felt AIRSHOX out performed the prototype suspensions of their exotic works bikes. As a bolt-on replacement for your production bike you can't buy a better rear suspension unit for it than the FOX AIRSHOX.



FOX AIRSHOX SPECIFICATIONS

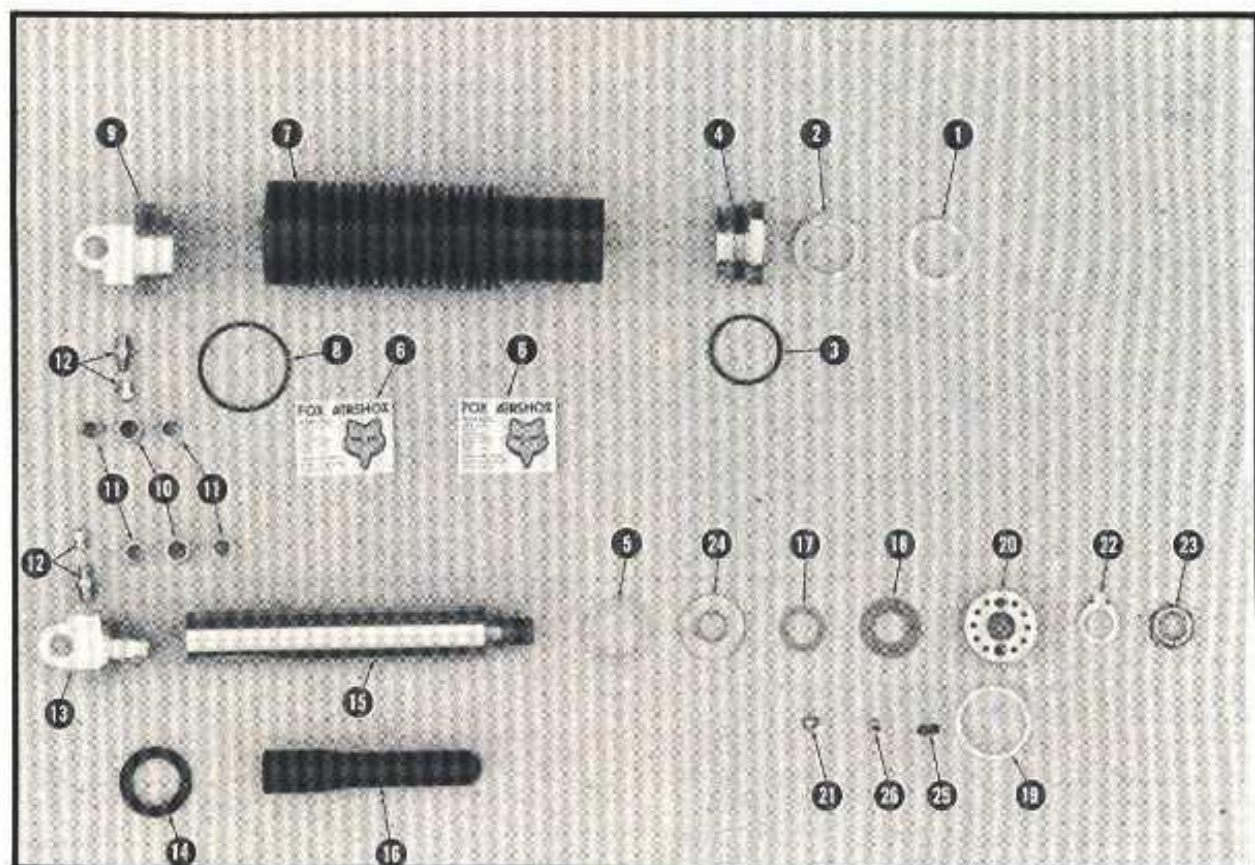
Part number	Nominal length	Actual length	Shaft travel	Bushings	Price pr.
99-1350	13.50 inches	13.40"/338mm	4.08"/103mm	8&10mm	\$265.00
99-1425	14.25 inches	14.14"/356mm	4.45"/112mm	10mm	265.00
99-1475	14.75 inches	14.80"/373mm	4.78"/120mm	10mm	265.00
99-1512	15.12 inches	15.29"/385mm	5.03"/127mm	10mm	265.00
99-1575	15.75 inches	15.79"/398mm	5.28"/133mm	8 & 10mm	290.00
99-1625	16.25 inches	16.16"/407mm	5.28"/133mm	8mm	290.00
99-1675	16.75 inches	16.70"/421mm	5.45"/137mm	8mm	290.00
99-1700	17.00 inches	17.18"/433mm	5.93"/149mm	10mm	290.00
99-1750	17.55 inches	17.55"/442mm	5.93"/149mm	10mm	290.00

Note: Actual length given is from shock eye to eye at full extension. Shaft travel is quoted as distance of travel from shock when fully open until contact with the 0.25 inch rubber bumper is made. Thickness of the rubber bumper should be considered in any calculations as it will compress on shock bottoming and add somewhat to the shaft travel of the shock depending on force applied.

APPLICATION CHART

Bike	AIRSHOX
Honda CR-125 Elsinore, 1976, '77	99-1425
Honda RC and CR-125R, CR-250R, R2	99-1750
Husqvarna GP 1975, '76	99-1350
Husqvarna CR 1977, '78	99-1512
Husqvarna CR 1977 with FOX #97-1751 swingarm	99-1750
Husqvarna CR 1979	99-1625
Husqvarna OR 1979	99-1700
KTM MC5	99-1350
KTM MC5 with mounts 1/2" up and 1/2" back	99-1425
Maico AW with stock swingarm	99-1350
Maico AW with FOX #97-1755 swingarm	99-1750
Maico Magnum with stock arm, modified clearance	99-1425
Maico Magnum with FOX #97-1758 arm, #97-3002 kit	99-1750
Suzuki RM-100B, C	99-1425
Suzuki RM-125A, B, C	99-1475
Suzuki RM-250/370B, C	99-1475
Suzuki RM-250/400 C2	99-1575
Suzuki RM-125B with FOX swingarm #97-1754	99-1750
Suzuki RM-125C with FOX swingarm #97-1761	99-1750
Suzuki RM-250/370B, C with FOX #97-1753	99-1750
Suzuki RM-250/400 C2 with #97-1759 or #97-3000	99-1750
Suzuki RM-125N (stock rear travel)	99-1625
Suzuki RM-125N (long travel neg. spring) NEW!	99-1675
Suzuki RM-250/400N	99-1575





ITEM	PART #	DESCRIPTION	PRICE/QTY
1.	99-0010	Shaft Wiper	\$ 9.95 pair
2.	99-0020	Shaft Seal	\$ 9.95 pair
3.	99-0030	O-Ring, Bearing (Std. O-Ring #2-131)	\$ 1.65 pair
4.	99-0040	Shaft Bearing	\$19.95 each
5.	99-0050	Top Out Bumper	\$ 2.95 pair
6.	99-0060	Airshox Label	\$.50 pair
7.	99-0071	Body, 13"	\$49.95 each
	99-0072	Body, 13 1/2"	\$49.95 each
	99-0073	Body, 14 1/4"	\$49.95 each
	99-0074	Body, 14 3/4"	\$49.95 each
	99-0075	Body, 15 1/8"	\$49.95 each
	99-0076	Body, 15 1/2" or 16"	\$49.95 each
	99-0077	Body, 15 3/4" or 16 1/4"	\$49.95 each
	99-0078	Body, 17" or 17 1/2" 16 3/4"	\$49.95 each
8.	99-0080	O-Ring, Cap (Std. O-Ring #2-139)	\$ 1.65 pair
9.	99-0091	Large End Cap, 16", 16 1/4", & 17 1/2"	\$23.35 each
	99-0092	Large End Cap, all sizes except above	\$23.35 each
10.	99-0100	Eyelet Bushings	\$.195 each
11.	99-0111	Split Reducer Bushings, 8mm	\$ 4.95 set of 8
	99-0112	Split Reducer Bushings, 10mm	\$ 4.95 set of 8
12.	99-0120	Air Valve	\$ 2.95 pair
13.	99-0130	Shaft Cap	\$19.95 each
14.	99-0140	Shaft Bumper	\$ 1.65 pair
15.	99-0151	Shaft, 13"	\$41.65 each
	99-0152	Shaft, 13 1/2"	\$41.65 each
	99-0153	Shaft, 14 1/2"	\$41.65 each
	99-0154	Shaft, 14 3/4" or 15 1/2"	\$41.65 each
	99-0155	Shaft, 15 1/8" or 16"	\$41.65 each
	99-0156	Shaft, 15 3/4" or 16 1/4"	\$41.65 each
	99-0157	Shaft, 17" or 17 1/2" 16 3/4"	\$41.65 each
16.	99-0161	Bladder, 13", 13 1/2" 14 1/2"	\$ 5.95 each



AIRSHOX

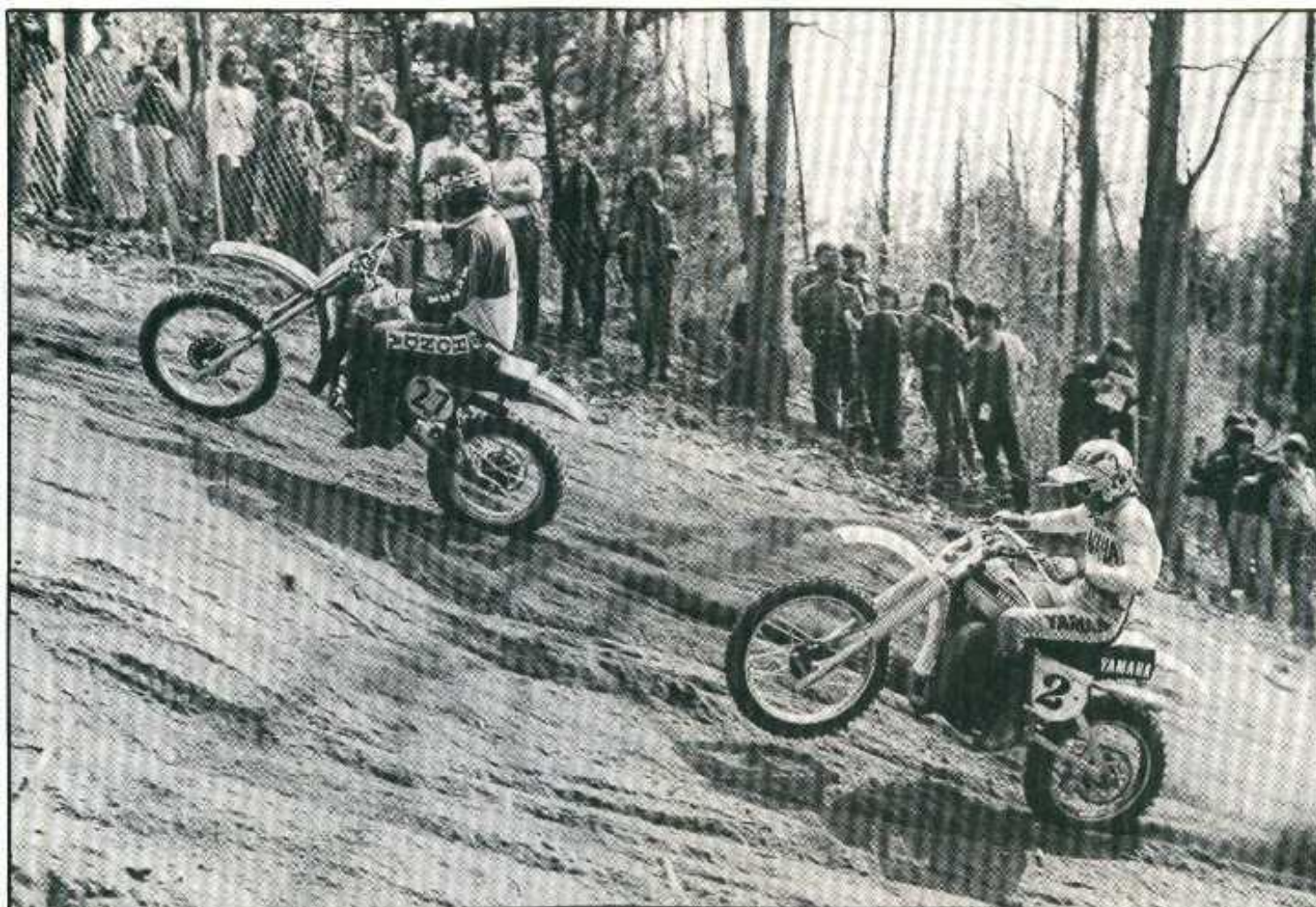


ITEM	PART #	DESCRIPTION	PRICE/QTY
	99-0162	Bladder, 14 3/4", 15 1/8", 15 1/2" 15 3/4", 16" 16 1/4"	\$ 5.95 each
	99-0163	Bladder, 17", 17 1/2" 18 3/4"	\$ 5.95 each
17.	99-0170	Valve, small (pre 6/78 Airshox	\$ 1.00 pair
18.	99-0180	Valve, Large only)	\$ 1.35 pair
19.	99-0190	Piston Ring	\$ 7.50 each
20.	99-0201	Piston	\$ 8.35 each
21.	99-2106	Jet, .106" orifice	\$ 2.00 pair
	99-2112	Jet, .112" orifice	\$ 2.00 pair
	99-2116	Jet, .116" orifice	\$ 2.00 pair
	99-2120	Jet, .120" orifice	\$ 2.00 pair
	99-2128	Jet, .128" orifice	\$ 2.00 pair
	99-2136	Jet, .136" orifice	\$ 2.00 pair
	99-2140	Jet, .140" orifice	\$ 2.00 pair
	99-2144	Jet, .144" orifice	\$ 2.00 pair
	99-2147	Jet, .147" orifice	\$ 2.00 pair
	99-2152	Jet, .152" orifice	\$ 2.00 pair
	99-2157	Jet, .157" orifice	\$ 2.00 pair
	99-2162	Jet, .162" orifice	\$ 2.00 pair
22.	99-0221	Spring Retaining Washer	\$.50 each
23.	99-0231	Locknut	\$ 1.50 each
24.	99-2425	Top-Out Plate	\$ 3.50 each
25.			
	99-2521	Rebound Spring, #2.1	\$ 1.50 pair
	99-2522	Rebound Spring, #2.2	\$ 1.50 pair
	99-2523	Rebound Spring, #2.3	\$ 1.50 pair
	99-2525	Rebound Spring, #2.5	\$ 1.50 pair
	99-2526	Rebound Spring, #2.6	\$ 1.50 pair
	99-2528	Rebound Spring, #2.8	\$ 1.50 pair
	99-2529	Rebound Spring, #2.9	\$ 1.50 pair
	99-2530	Rebound Spring, #3.0	\$ 1.50 pair
	99-2531	Rebound Spring, #3.1	\$ 1.50 pair
	99-2532	Rebound Spring, #3.2	\$ 1.50 pair
	99-2535	Rebound Spring, #3.5	\$ 1.50 pair
26.	99-0260	1/4" Ball Valve	\$.50 pair

AIRSHOX ACCESSORY ITEMS.

99-0310	Owner's Manual	\$ 2.95 each
99-0340	Shaft Bearing Wrench	\$ 8.95 each
99-0350	Shaft Seal Installation Tool	\$ 6.95 each
99-0360	Shaft Clamp, Split	\$ 9.95 each
99-9000	Rebuild Kit (includes 2 shaft seals, 2 shaft wipers, 2 bearing O-rings, 2 top-out bumpers, and 1 seal installation tool).	\$24.95 per kit
98-0200	Deluxe Pressure Gauge, 0-200 psi	\$29.95 each
98-2200	Deluxe Gauge With Hose, 0-200 psi	\$39.50 each

99-0270	Negative spring (16 3/4")	\$1.95 ea.
99-2410	Top Out Plate 1.0 (Softest)	3.50 ea.
99-2415	Top Out Plate 1.5	3.50 ea.
99-2420	Top Out Plate 2.0	3.50 ea.
99-2425	Top Out Plate 2.5 (Standard)	3.50 ea.



Some of the world's top motocrossers are instrumental in the design and testing of Fox products. Among them, Brad Lackey has contributed significantly to the development of such items as the Fox AirShox used in National and International competition.



MOTO-X FOX believes in the philosophy **"WE RACE WHAT WE SELL, AND WE SELL WHAT WE RACE."** In this respect we are not your ordinary dirt bike oriented accessory distributor, but dedicated enthusiasts deeply involved in the sport of motocross. For us, racing is not just a means to help us gain more publicity and sell more accessories, but the opportunity to involve ourselves in something we want to do.

Along the way we've discovered that racing truly does improve the breed. You can't develop state of the art motocross products unless you seriously campaign the toughest events like the Nationals, the World Championships and Trans-AMA Series. That's where you'll find us, and that's where products like our famous FOX AIRSHOX and other suspension related components were proven the best there are. No other accessory company puts out the R&D effort that MOTO-X FOX does and that's why our record and our products are unmatched. Even our competitors use our products, but our finest endorsement of all comes from some of the best factory riders in motocross who won't swing a leg over their exotic works bikes unless they know FOX products will be supporting them on their way to the winner's circle. The very same FOX products which are available for you and your bike.

Geoffrey Fox is the owner and founder of MOTO-X FOX, INC., which is located in Campbell, California, approximately fifty miles south of San Francisco. MOTO-X FOX is primarily a distributor of major motocross accessories, but Geoffrey does have a hand in the development and manufacturing of

exclusive products to the MOTO-X FOX line. TEAM MOTO-X FOX is part of MOTO-X FOX, INC., with Geoffrey serving as director and Chuck Tannlund as team manager.

Bob Fox is the owner and founder of FOX FACTORY, INC., which is primarily a design, development and manufacturing company for FOX products. Both MOTO-X FOX and FOX FACTORY share a strong working relationship and all the products manufactured by FOX FACTORY are distributed exclusively through MOTO-X FOX.

In its short history TEAM MOTO-X FOX has turned in quite an impressive record. Beginning in 1977 with Pat Richter as the team's first rider and the Suzuki RM-125 the first production bike put under modification. The first 125cc National of the year saw Pat nearly pulling off the overall win, eventually dropping back to second place due to problems. At the Mid-Ohio U.S. 125cc Grand Prix he placed first American and top non-factory rider in third overall behind the European stars.

Later during the 1977 Nationals Pat was joined on TEAM MOTO-X FOX by Steve Wise with his modified production Honda and Mark Barnett on another RM Suzuki. Together the three FOX riders finished out the National Championship Series as the three highest placing non-factory riders in fifth, sixth and seventh position. Those finishes in turn helped TEAM MOTO-X FOX to edge out Team Suzuki and Team Honda as the second highest placing manufacturer in AMA points behind Team Yamaha.

During the fall of 1977 Pat Richter was forced into temporary retirement for a knee operation, but



FOX MONOSHOCK

MOTO-X FOX now offers the performance and reliability made famous by the AIRSHOCK in a new MONO AIRSHOCK line for Yamahas. This is the only shock which will hold up to the rigors of long 45-minute motos reliably in National Championship motocross without fading. Additionally, the MONO AIRSHOCK is available in 11 or 12 inch travel lengths for the easiest bolt-on solution to more travel for your YZ or IT Yamaha.

The MONO AIRSHOCK offers a number of important advantages over the stock Yamaha monoshock unit. Among them, the AIRSHOCK has more internal oil volume exposed to a larger surface area to reduce overheating. It's completely rebuildable if parts replacement ever becomes necessary, though its sturdy construction means it will last you a lot longer than your bike. Dampening is adjustable internally, while the air spring rate may be tuned quickly from the outside of the shock to match riding conditions.

Unlike the regular AIRSHOCK which uses dual-stage air springs, the MONO AIRSHOCK works on the gas charged oil principle with a single stage adjustable air spring for simplicity. An internal negative spring works to keep the spring rates for the initial few inches of travel really plush so your bike will float its way over the smaller bumps yet the main air spring has the right rate required to tackle the bigger bumps and jumps. The air spring progression may also be altered with a slight change in internal oil volume if desired. And along with all these advantages, just bolting on a FOX MONO AIRSHOCK will give you a 2-3 pound weight reduction over the stock Yamaha monoshock unit.

Join the top Yamaha riders in the country and install a FOX MONO AIRSHOCK on your YZ or IT Yamaha.

99-1000	11 Inch travel MONO AIRSHOCK for YZ-125/250/400D, E models and IT-125/175/250/400 models	\$225.00
99-1001	12 Inch travel MONO AIRSHOCK for YZ-125/250/400D, E models and IT-125/175/250/400 models	225.00
99-1002	11 Inch travel MONO AIRSHOCK for YZ-125/250/400F models	225.00
99-1003	12 Inch travel MONO AIRSHOCK for YZ-125/250/400F models	225.00

Note: On D and E model YZs we recommend running 1" more travel at the rear than at the front to quicken handling which is slower on these models than the new 1979 F model YZs.



SIMONS FORKS

Equal in performance to some of the exotic prototype forks on many of the top factory works bikes, Simons forks have held the reputation for being the best accessory forks on the market. TEAM MOTO-X FOX used Simons forks on its race bikes during the 1977 and 1978 racing season as did other teams like Honda and Can-Am.

What makes Simons forks so great are their extra sturdy construction with 38mm tubes and hefty triple clamps to prevent the usual flex associated with stock production front forks with long travel. Fork action is controlled by air/spring action and progressive rate dampening for the best possible handling.

Installation of Simons forks are strictly bolt-on for most brands of motorcycles. Travel is available at 10, 11 or 12 inches. Please order by including the year model and type of bike the forks will go on, as well as the amount of travel you want. Price: \$369.00 complete.

37-9000 Simons fork rebuild kit (seals, wipers, O-rings) \$24.95

Application	11" Travel	12" Travel
Honda CR-250R	n.a.	37-0219
Husky 1978	37-0014	37-0214
KTM	37-0032	n.a.
Maico Magnum	37-0052	37-0052
Suzuki RM pre '78	37-0022	37-0222
Suzuki RM 1978	37-0023	37-0223
Suzuki RM-N	37-0062	37-0262
Yamaha TT-500	37-0016	37-0216
Yamaha YZ-125/400D,E,F	37-0017	37-0217

SIMONS FORK SEALS

Replace your weepy stock Maico fork seals with these quality seals from Simons. Three different kits are available to match the changes Maico has made to their 38mm forks in the past few years. It is important to note that Maico's changes to their forks do not exactly coincide with model years so you need to check your particular forks before ordering.

- 39-5020 Simons Maico Seal Kit: Stock seal will have O.D. of 50mm marked on it. This was offered in 1975½ and 1976. \$24.95
- 39-5021 Simons Maico Seal Kit: Stock seal will have O.D. of 47.52mm marked on it. For 1977 model Maicos without air forks as stock equipment. 24.95
- 39-5022 Simons Maico Seal Kit: Stock seal will have O.D. of 47.52 marked on it. For later 1978 model Maico which came equipped with air forks as stock equipment. 24.95









FOX SHOX

The original FOX SHOX remains one of the finest accessory shock absorbers on the market today for nearly all off-road riding and racing applications. For the price no other replacement shock can offer you the performance, reliability and quality that most of the world's top riders have come to expect from MOTO-X FOX.

FOX SHOXs work on the Girling principle when used without the optional reservoirs to offer you the simplest and most reliable shock absorber possible. The half inch diameter precision ground and hard chrome plated shaft is the finest in the field. The precision engineered bronze piston and bearing, combined with the steel shaft and body provide a strong bearing surface assuring long life. The piston ring is a teflon related material which will last for years. The shaft seal and wiper are made of a specially compounded polyurethane material which will outwear rubber by five times.

Each FOX SHOX is totally rebuildable and parts are readily available. They are also easily tunable for dampening rate, preload, with a large selection of springs available to tune the shocks in perfectly for your particular application.

Price: \$109.00 per pair. Includes spring retainers, reducer sleeves so that 12, 10 or 8mm bolts can be used for mounting, plus an owner's manual with parts listing. (Springs and remote reservoirs not included. Order separately if needed).

FOX SHOX



FOX SHOX SPECIFICATIONS

Part No.	Length	Travel	Damping
38-1299	13ins.	330mm	4.3ins. 109mm Soft
38-1300	13ins.	330mm	4.3ins. 109mm Medium
38-1301	13ins.	330mm	4.3ins. 109mm Firm
38-1349	13.5ins.	343mm	4.6ins. 116mm Soft
38-1350	13.5ins.	343mm	4.6ins. 116mm Medium
38-1351	13.5ins.	343mm	4.6ins. 116mm Firm
38-1352	13.5ins.	343mm	4.6ins. 116mm XFirm
38-1424	14.25ins.	362mm	4.9ins. 124mm Soft
38-1425	14.25ins.	362mm	4.9ins. 124mm Medium
38-1426	14.25ins.	362mm	4.9ins. 124mm Firm
38-1475	14.75ins.	375mm	4.9ins. 124mm Medium
38-1476	14.75ins.	375mm	4.9ins. 124mm Firm
38-1516	15.12ins.	385mm	5.3ins. 135mm Firm
38-1550	15.5ins.	394mm	5.5ins. 140mm Medium
38-1551	15.5ins.	394mm	5.5ins. 140mm Firm
38-1600	16ins.	406mm	5.5ins. 140mm Medium
38-1700	17ins.	432mm	6.0ins. 152mm Medium
38-1750	17.5ins.	445mm	6.5ins. 165mm Medium

Note: 17 inch and 17.5 inch FOX SHOX are designed to be used with our short dual rate white springs plus the 11 inch long primary springs.

LONG SHOCK EYE

An inexpensive way to alter shock length is to replace the stock shock eye with one of our longer versions. This will give you a longer shock. Be sure to order two.

38-1012	Shock eye, .50 ins. longer than stock	\$4.95 each
38-1011	Shock eye, .75 ins. longer than stock	4.95 each

REMOTE RESERVOIRS

For the most severe applications and the most demanding riders FOX SHOX REMOTE RESERVOIRS are available. Our aluminum bodied REMOTE RESERVOIRS reduce shock temperature 30-50°F, reduce fade and increase seal life. They are strongly suggested on radical geometries (greater than 2.0 S.L.R.) such as KTM/Penton MC-5 and AW Maico. If you are running spring rates of 70/135 or softer there is little to be gained by using them however.

Our REMOTE RESERVOIRS are available in easy to install kit form only. Complete instructions are included.

38-5000	FOX SHOX RESERVOIRS	\$50.00 kit
---------	---------------------	-------------

REMOTE RESERVOIR PARTS LIST

38-5010	Reservoir Body	\$15.00 each
38-5020	Reservoir Body Cap	4.50 each
38-5030	O-Ring	1.00 pair
38-5040	Bladder	5.00 each
38-5050	Hydraulic line	10.00 each
38-5060	Right Angle Fitting	2.50 pair
38-5070	Hose Clamps	3.20 four
38-0220	Gas Valves	2.95 pair



FOX MINI MONO SHOX

Now we have a complete FOX SHOX kit for owners of Yamaha YZ-80s. This is a specially designed SHOX with extra firm dampening just for the Yamaha. It comes in a kit which is complete with spring and all parts, ready to bolt on. The FOX MINI MONO SHOX even has a FOX REMOTE RESERVOIR which works on the deCarbon principle, just like the big Yamaha OW factory works bikes.

38-1302	FOX MINI MONO SHOX for Yamaha YZ-80E. Increases travel from 4.5 ins. to 6.5 ins. at rear wheel. Price: \$89.00
38-1477	FOX MINI MONO SHOX for Yamaha YZ-80F. Increases travel from 7.5 ins. to 8.5 ins. at rear wheel. Price: \$95.00

FOX SHOX PARTS

FOX SHOX PARTS LIST

- 38-9000 REBUILD KIT. Consists of two each of wipers, seals and O-rings. Price: \$7.95
- 38-0001 BULLET TOOL. Special tool for sliding shaft seal past threads on end of the shaft. Price: \$4.95.

The parts listed below are for the FOX SHOX with the improved dampening design. If you have the older design FOX SHOX which utilize jets for dampening, please consult your owner's manual for the correct part numbers. In particular, the parts marked with an (*) asterisk will not interchange with the corresponding parts in the jet type FOX SHOX.

Illustration Number	Part Number	Description	Price/Qty.
3	38-1033	*Shaft 13"	\$9.95 each
3	38-1034	*Shaft 13½"	9.95 each
3	38-1035	*Shaft 14¼" & 14¾"	9.95 each
3	38-1038	*Shaft 15¼"	9.95 each
3	38-1036	*Shaft 15½"	9.95 each
3	38-1037	*Shaft 17½"	9.95 each
4	38-0040	Rubber Bumper	1.95 pair
5	38-0052	Seal Cap	3.95 each
6	38-0060	Shaft Bearing	3.95 each
7	38-0072	*Piston w/ring	4.95 each
7	38-0071	Piston ring only	1.95 pair
9	38-0091	*Valving-MEDIUM	2.95 set
9	38-0092	*Valving-FIRM	2.95 set
9	38-0093	*Valving-XFIRM	2.95 set
10	38-0100	*Top Out Bumper	2.50 pair
11	38-0110	*Shaft Stop Washer	1.00 pair
12	38-0120	Rubber Bushing	4.50 pair
13	38-0130	Jam Nut	.50 pair
15	38-0150	Spring Retainer	4.95 pair
17	38-0170	O-Ring	1.50 pair
20	38-0200	Spring Retainer	3.95 pair
21	38-0210	Snap Ring-outer	1.00 pair
22	38-0220	Gas Valve	2.95 pair
23	38-0230	Snap Ring-inner, flat	.75 pair
23A	38-0231	Snap Ring-inner, bowed	.75 pair
25	38-0250	Piston Nut	1.00 pair
27	38-0270	Plastic Body Cap	1.95 pair
28	38-0280	Reducer 12-10 mm	1.95 four
29	38-0290	Reducer 12-8mm	1.95 four
30	38-0300	Shaft Seal	5.00 pair
101	38-1010	Eye Assembly	4.95 each
101	38-1012	Eye Assembly +¼"	4.95 each
101	38-1011	Eye Assembly +¾"	4.95 each
111	38-1113	Body 13"	14.95 each
111	38-1114	Body 13½"	14.95 each
111	38-1115	Body 14¼" & 14¾"	14.95 each
111	38-1119	Body 15¼"	14.95 each
111	38-1117	*Body 15½"	14.95 each
111	38-1118	Body 17½"	14.95 each
not shown	38-0310	Spring Locators	1.50 pair
not shown	38-0320	Spring Guides	1.50 pair
	38-5080	FOX SHOX-sticker	1.00 four
26	38-0260	Shaft wiper	4.50 pair

REBUILDING FOX SHOX:

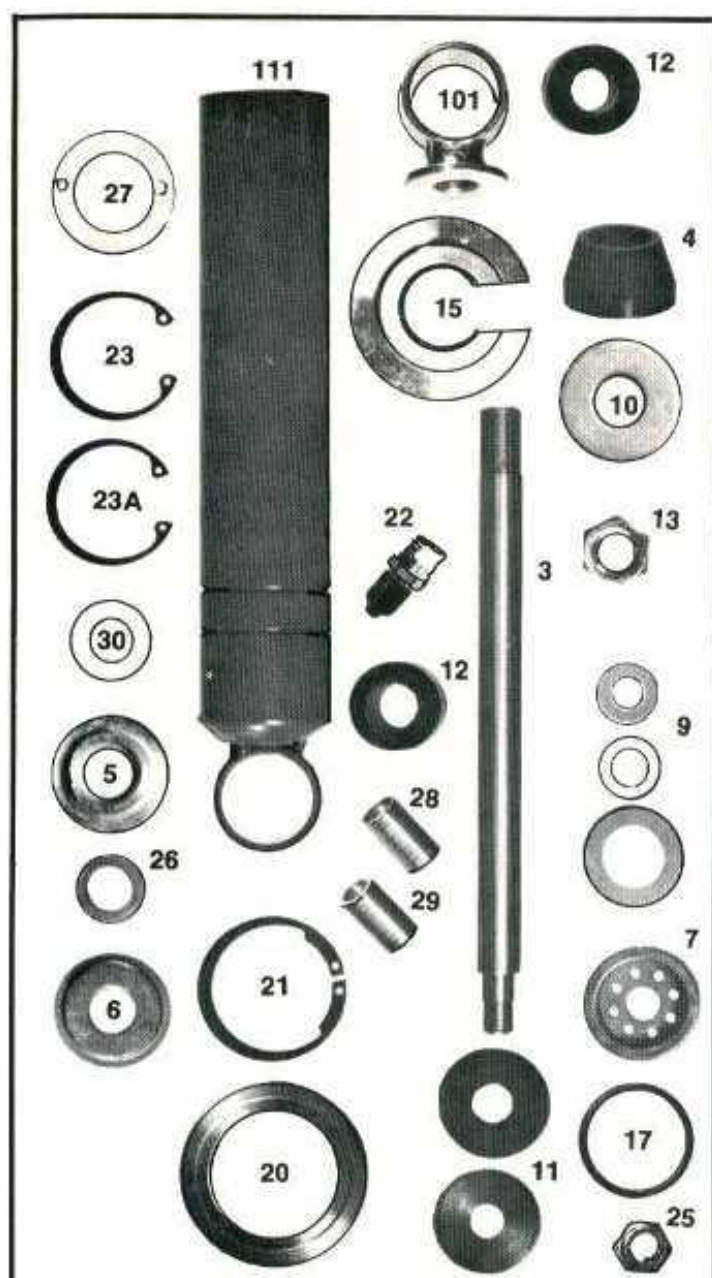
We are happy to offer a rebuilding service for FOX SHOX. When sending us your FOX SHOX for work please:

1. Remove springs, reducer bushings & spring retainers.
2. Insure your shipment to be sure of delivery to us.
3. Include a note describing work you want done.
4. Include your name and return address.

Your rebuild will be done within 5 working days of receipt and then shipped back to you with the charges C.O.D.

We will charge you for the parts installed plus the following labor schedule:

Normal Rebuild	\$10.00 pr.
Rebuild w/Reservoirs	20.00
Install Reservoirs only	15.00





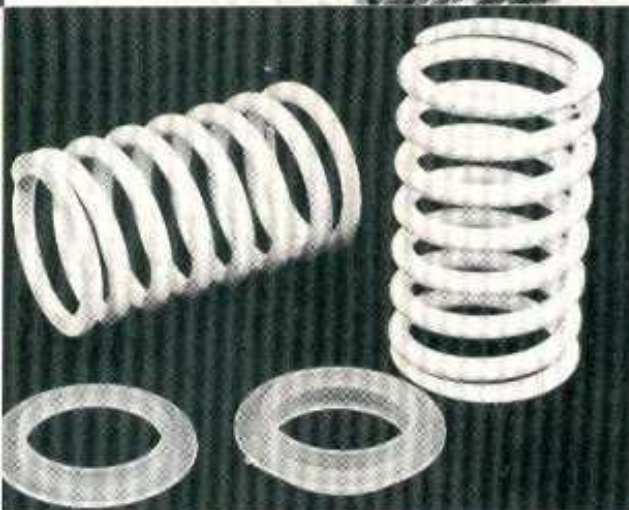
DUAL RATE FOX SHOX SPRINGS are a significant advance in rear suspension. They provide a soft response over small bumps and yet are stiff enough to prevent excessive bottoming on large bumps. They were developed with the help of top riders during the 1975 TRANS-AMA SERIES. On the 1976 GRAND PRIX CIRCUIT virtually every rider was using dual rate springs. While others follow, the MOTO-X FOX continues to lead as we develop more combinations of springs for different applications. This also helps riders to further fine tune their suspensions to their own individual needs.

Part No.	Spring Rate	Length	Spring Color	Color Code	Price
87-0050	50	8.55 ins.	Blue	White	\$16.50 pr
87-0060	60	8.55 ins.	Blue	Orange	16.50 pr
87-0105*	105	9.05 ins.	Blue	Dark Green	16.50 pr
87-0135	135	8.55 ins.	Blue	Red	16.50 pr
87-0165	165	8.55 ins.	Blue	Light Green	16.50 pr
87-0195	195	8.55 ins.	Blue	Yellow	16.50 pr
87-1450	Soft	2.85 ins.	White	No color code	5.95 pr
87-2500	Stiff	2.85 ins.	White	Red	6.75 pr

*Not for use on 13," 13½" or 17" FOX SHOX.

COMBINATIONS OF SPRINGS

Two springs are used on each shock absorber. One spring is painted white and the other longer spring is painted blue. The springs are designed so that initially both the white and the blue spring are working together to give a soft spring rate. About halfway through the travel the white spring coil binds and then the spring rate is determined by the blue spring alone.



11" SPRINGS

Eleven inch long shock springs made by S & W. These springs can be used on the 13," 13½" 14½" and 15" FOX SHOX by themselves. The 17½" FOX SHOX require a set of the short white soft springs # 87-1450 to be used in conjunction with a pair of 11" long springs. These springs can also be used on gas Girling shocks.

Spring Rate	Blue Spring	White Spring	Remarks
37/50	87-0050	87-1450	For mini-motorcycles—soft
42/60	87-0060	87-1450	For mini-motorcycles—firmer
60/105	87-0105	87-1450	Not for use on 13," 13½," 17" or 17½"
70/135	87-0135	87-1450	
77/165	87-0165	87-1450	
83/195	87-0195	87-1450	
74/105	87-0105	87-2500	Not enough change.
88/135	87-0135	87-2500	Not enough change.
100/165	87-0165	87-2500	
110/195	87-0195	87-2500	Stiffest combination we make

Spring locators and guides are packaged with each pair of white springs. They are also available separately.

38-0310	Spring Locators (end pieces)	\$1.50 pair
38-0320	Spring Guides (middle pieces)	1.50 pair

86-0060	60 lbs/in. color code—plain	\$22.00 pr.
86-0070	70 lbs/in. color code—blue-blue	22.00 pr.
86-0080	80 lbs/in. color code—blue-red	22.00 pr.
86-0090	90 lbs/in. color code—blue-brown	22.00 pr.
86-0100	100 lbs/in. color code—blue-orange	22.00 pr.
86-0110	110 lbs/in. color code—blue-pink	22.00 pr.
86-0125	125 lbs/in. color code—blue-purple	22.00 pr.
86-0135	135 lbs/in. color code—blue-yellow	22.00 pr.

FORK KITS AND GAS FORK CAPS

The gas fork revolution started at MOTO-X FOX in 1974. It was then that we tested with riders like Brad Lackey to develop the ultimate in front suspension for the Grand Prix tracks of Europe. Within months we were copied by most of the major factory teams, but we still beat them to the punch when in 1976 we introduced the first spring/gas fork kits to the general public. Our complete fork kits offer you improved dampening with our own special spring valve dampening rods, lightweight internal fork springs and air caps for the ultimate in spring progression rates which can be easily tuned to your particular riding.

Bike	Gas Fork Caps Part No.	Price	Spring/Air Part No.	Kit* Price
Betor 35mm	39-1005	\$14.95		
Betor 38mm				
(Bultaco 1976)	39-1015	15.95	39-2015	\$59.95
Ceriani 35mm	39-1020	12.95	39-2020*	33.95
Honda CR-125				
1977, 78	39-1017	12.95	39-2017	59.95
Honda XR-75				
1974-77	39-1028	10.95		
Honda CR-125R	39-1029	12.95		
Honda CR-250R	39-1025	12.95		
Husqvarna 1976	39-1001	14.95		
Husqvarna 1977	39-1001	14.95	39-2023*	26.95
Kawasaki KX-80				
1979	39-1030	10.95		
Maico 38mm				
(not Magnum)	39-1018	12.95	39-2018	59.95
Marzocchi 35mm	39-1016	12.95	39-2016*	33.95
Marzocchi 38mm	39-1024	12.95	39-2024*	33.95
Suzuki				
RM-80B, C	39-1022	10.95		
Suzuki RM-80N	39-1031	12.95		
Suzuki RM-100C	39-1027	12.95		
Suzuki RM-125 & RM-125A				
(not B or C)	39-1011	14.95		
Suzuki RM-250/ 370 & 250/370B				
(but not C)	39-1013	14.95	39-2013	59.95
Suzuki DR-370	39-1026	12.95		
Yamaha YZ-80E	39-1022	10.95		
Yamaha YZ-80F	39-1031	12.95		
Yamaha				
TT-500C	39-1011	12.95	39-2021	59.95

Damper rods included except in kits marked with.

VARIABLE DAMPENING TAPERED DAMPER RODS

Compression damping in these rods is variable through the use of a spring loaded pressure relief valve. This results in a plusher ride than with the stock damper rods. More travel too.

Suzuki RM-125B, C	39-2030	\$50.00
Suzuki RM-250C, C2/400C	39-2031	50.00
Yamaha YZ-125, E	39-2040	50.00
Yamaha YZ-250/400D	39-2041	50.00



GRAND PRIX SPRING KITS:

The latest fork improvement from MOTO-X FOX. These progressive springs were developed in Europe for use with the factory spring/air forks. They increase fork travel between 0.5 to 0.75 inches. They also provide better spring rates with the progressive windings provided. A real bargain.

Bike	Part No.	Price
Maico Magnum 1978, 79	39-6004	\$15.95
Suzuki RM-125B, C	39-6001	15.95
Suzuki RM-125N	39-6005	18.95
Suzuki RM-250/400C	39-6002	15.95
Suzuki RM-250/400N	39-6006	18.95
Yamaha YZ-125D, E	39-6001	15.95
Yamaha YZ-125F	39-6003	18.95
Yamaha YZ-250/400D, E	39-6002	15.95
Yamaha YZ-250/400F	39-6007	18.95



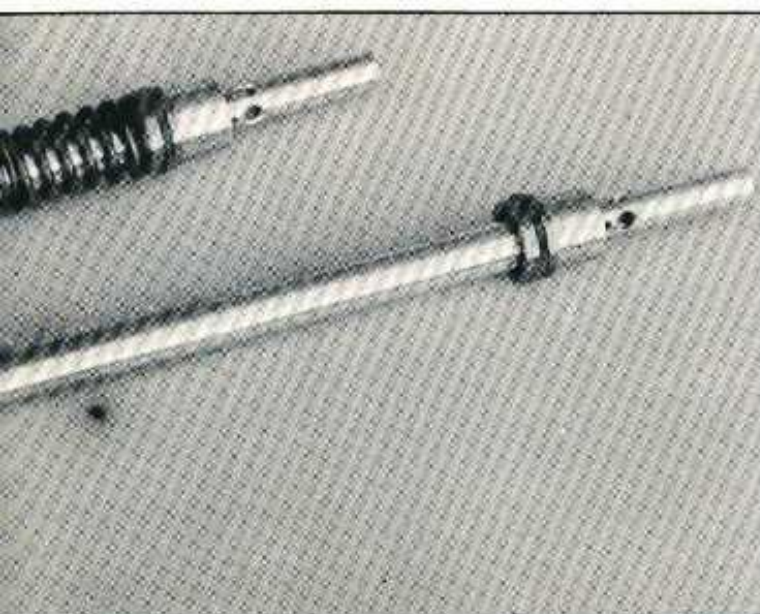
Guaranteed not to leak for one year from date of purchase if installed according to the directions included. Patented in both the U.S.A. and Canada. This is the top of the line.

26-7201	(35x47mm)	AJS, Betor, Boge, Bultaco, Ceriani, CZ, HD, Husky (late), Ossa, KTM	\$12.95
26-7203	(35x45mm)	Husky (early—before serial #M706023)	12.95
26-7204	(35x47mm)	Maico (to 1975½)	12.95
26-7206	(36x48mm)	Kawasaki F11MX, H1-E-F, H2-B-C, KH500, KZ250-400-450, KZ750-900, KX250-450, Z1-A-B Yamaha TT500C, TX650-A, TX750A, XS650C, XS750C, XT500C, YZ125X, YZ250C, YZ400C Suzuki RM250M-A-B, RM370M-A-B	12.95
26-7207	(34x46mm)	Kawasaki F5, F8, F81M, F9-B-C, F11-A-B, F12MX, KH400, KT250, S2A, S3A Yamaha DS7, DT1E-2-3, DT250A-B-C, DT360A, DT400B-C, IT400C, MX250A-B, MX360A, MX400B, R5-B-C, RD200C, RD250-A-B, RD350-A-B, RD400C, RT1B-MX, RT2-MX, RT3-MX, SC500-A, TX500-A, TY250-A-B-C, XS2, XS360C, XS500B-C, YZ100C, YZ125C, YZ175C, YZ250B-C, YZ360A-B, YZ400C Suzuki TM250J-K, TM400J, TS250K-L-M-A, TS400K-L-M-A	12.95
26-7208	(30x40mm)	Kawasaki F7-C-D, KD100, KD175, KM100 Yamaha AT2-MX, AT3-MX, CT2-3, DT125A-B-C, DT175A-B-C, MX125A-B-C, MX175A-B, TY175B-C, YZ125A-B Suzuki GT185L-M-A, RM100A, RV125L-M-A, TC100L-M-A, TC125L-M-A, TC185L-M-A, TM100L-M, TM125K-L-M, TS100L-M-A, TS125L-M-A, TS185L-M-A	12.95
26-7209	(35x48mm)	Honda CB450K3-K4-K5-K6-K7, CB550-K1-F, CB750K1 (after #1048805) K2-K3-K4-K5-F, CL450K5-K6, CR125M2, CR250M-M1, MR250, MT250-K1, XL250-K1-K2, XL350-K1 Suzuki GT500A, GT550J-K-L-M-A, GT750J-K-L-M-A, RE5, RL250L-M-A, RM125M-A, TM250L-M, TM400K-L-M	12.95
26-7210	(31x43mm)	Honda CR125-M1, MR175, MT125-K1, TL125-K1-K2, XL100-K1, XL175-K1 Kawasaki KD125, Ke125, KS125-A, KX125-A	12.95
26-7218	(27x39mm)	Honda XL70-K1, XR75-K1-K2, Kawasaki KD80, MC1-A-B-M-MA, Suzuki TM75L-M-A, TS75M-A, RV90L-M-A, Yamaha YZ80A-B-C	12.95
26-7219	(25x35mm)	Honda MR50-K1, Yamaha TY80-A-B	12.95
26-7221	(37.78x50mm)	Maico 1975½ on on. (Internal springs) Includes wipers & retainers	24.95
26-7224	(38x50mm)	Betor-Bultaco	12.95
26-7307	(10x22mm)	Marzocchi Gas Shock Seal Kit (10mm shaft only)	7.95
26-0021	(37.78x50mm)	Maico 1975½-77 Internal Spring	12.95
26-0030	(37.75x47.52mm)	Maico 1977½ on	

KONI REBUILD KIT

With our rebuild kit you can rebuild a pair of Koni shocks (the black bodied ones). Each kit includes a pair of seals, two O-rings and instructions.

19-9000 Koni rebuild kit \$4.95



MOTO-X FOX FORK BOOTS

Deluxe fork boots are now available from the FOX in colors. They will fit most forks from the small tube Elsinores on up to 38mm like Maico and 1976 Bultaco. And our price is under the others.

09-2001	Black	only
09-2002	Yellow	\$7.50
09-2003	Red	per
09-2004	Blue	pair

SUNDANCE FORK BOOTS

A unique new design which gives the shortest compressed length of any fork boot. Small convolutions compress inside larger convolutions to accomplish this. Fits all popular motocross and enduro machines. Maximum length without stretching is 12"; maximum compression yields a 2" length which includes the length of the flanges at each end.

06-2621	SUNDANCE Fork Boots	Black	\$10.95/pr.
06-2663	SUNDANCE Fork Boots	Red	10.95/pr.
06-2667	SUNDANCE Fork Boots	Yellow	10.95/pr.



FOX went on to campaign the Trans-AMA Series with Wise in the Open class on a 370 Suzuki and Barnett in the Support class on a 250 Suzuki. Both riders did well enough that Wise was hired by Team Honda and Barnett by Team Suzuki for the coming season.

The 1978 racing season saw MOTO-X FOX turning its attention to improving other brands of production bikes as well. Danny Turner was signed on as the team's top rider for the 125cc Nationals where he turned in impressive rides, taking his Yamaha YZ-125 to fifth overall in the final standings and giving MOTO-X FOX the top non-factory placing once again.

The other main TEAM FOX rider for the 1978 season was Jim Turner who campaigned a FOX modified Suzuki RM-400 in the Open Nationals and a Honda CR-250 in the Trans-AMA Support class with strong results. Jim's most impressive showing though, came in the Canadian National Championships where he rode both classes on the two different bikes to garner the overall title of CANADIAN CHAMPION.

For the 1979 racing season, TEAM FOX will put together its strongest attack on the circuit ever with entries in every National Championship class as well as one of the World Championships!

Released in the 125cc Nationals will be youngster Donnie Cantaloupi, up from FOX's farm club where he had been terrorizing the troops in local California races. Aboard a modified Yamaha YZ, Donnie will do battle with the big boys and, perhaps, pull off a surprise or two. The strongest TEAM FOX attack will take place in the 250cc class where Larry Wosick, Pat Moroney and Pat Richter will be on CR Hondas. In the Open class Randy Kirschbaum will probably be aboard a Maico as FOX continues to expand its accessory line to other brands of bikes as well. Jim Turner will lend support to Kirschbaum at a few selected Open Nationals with FOX's special 360cc CR Honda, but most of the year for Jim will be spent in Europe where he will campaign another FOX modified Honda in the 250cc World Championships.

With a race team which rivals the major Japanese factory teams for sheer size it's easy to see that MOTO-X FOX is serious about doing well. That's why our motocross accessories are the best. We couldn't afford for them to be less. Not when **"WE RACE WHAT WE SELL, AND WE SELL WHAT WE RACE."**

MOTO-X FOX SWINGARMS AND KITS

TEAM MOTO-X FOX has been the leader in motocross suspension technology and one of our innovations which has really been proven to help handling is our aluminum swingarms for production bikes. Designed for use in conjunction with our long 17.5 inch AirShox, these aluminum swingarms offer less unsprung weight, increased rear wheel travel, plus more strength and stability for better tracking and handling. Along with improving your stock front forks, a MOTO-X FOX rear suspension system is the most important modification you can make to your bike.

97-1753	Swingarm, Suzuki RM-250B, C and RM-370B	\$145.00
97-1754	Swingarm, Suzuki RM-125B	145.00
97-1758	Swingarm, Maico Magnum 1978, '79	145.00
97-1759	Swingarm, Suzuki RM-250C2 and RM-400C	145.00
97-1760	Swingarm, Husqvarna 1978	145.00
97-1761	Swingarm, Suzuki RM-125C	145.00
97-1762	Swingarm, Honda CR-250R, R2	148.00
97-1003	Swingarm, Suzuki RM-80C,N (w/stock length shocks)	109.00
97-1763	Swingarm, Maico Magnum bent (w/stock length shocks)	159.00



SWINGARM KITS

Special bracket kits allow the installation of 17.5 inch AirShox to your stock swingarm for increased travel and stability, but at a price much less the cost of a new aluminum swingarm. Cutting and welding of your stock swingarm is required, though.

97-3000	Swingarm kit, Suzuki RM-250C2 and RM-400C	\$19.95
97-3002	Swingarm kit, Maico Magnum 1978, '79	9.95

MINI SWINGARMS

Our aluminum swingarms save weight, increase rigidity and due to their extended length they improve stability. They also look neat.

97-1001	YZ-80D Aluminum swingarm	\$99.00
97-1003	Swingarm, Suzuki RM-80C,N	109.00

BRONZE BUSHINGS

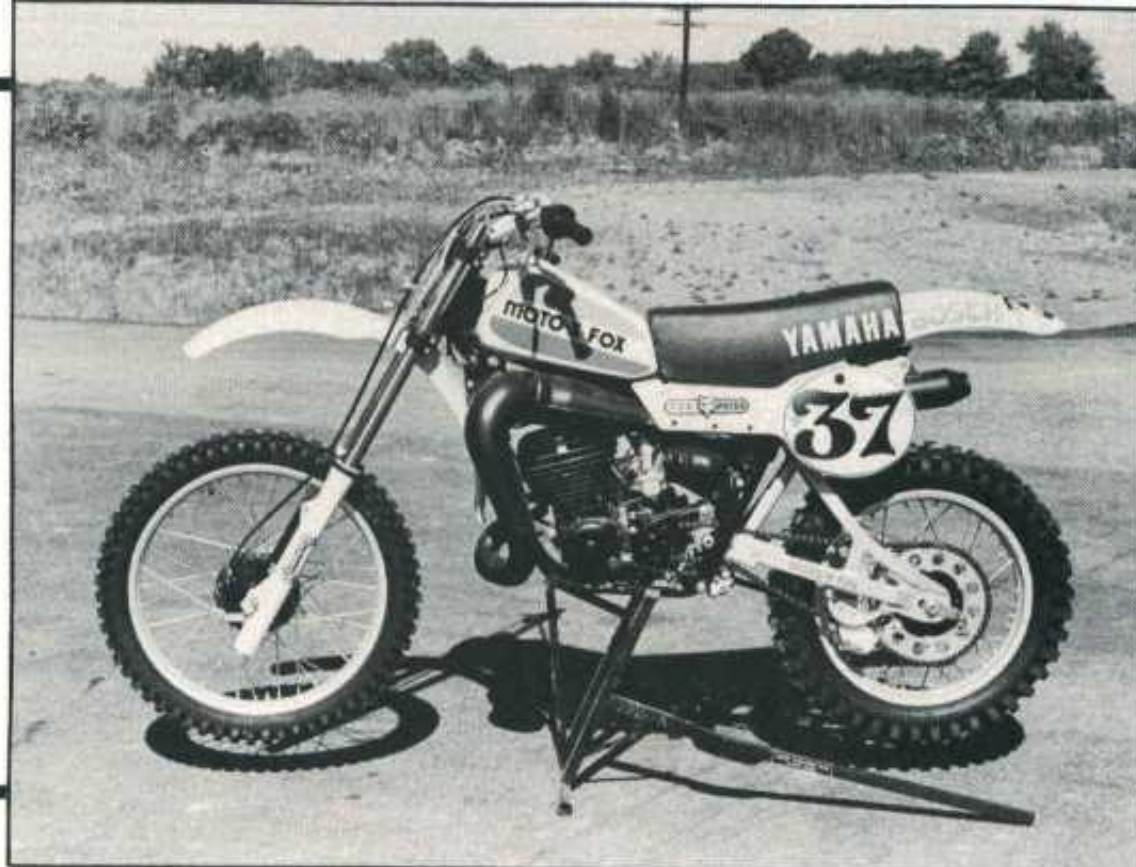
The way to reduce swingarm play is to use precision machined bronze bushings instead of the stock plastic units. Ours are tops in quality and low in cost.

75-7330	Honda CR-125	\$8.95
75-7500	Honda CR-125 Brake Pedal Bushings	\$4.50

FORK OIL

18-2010	GOLDEN SPECTRO Gear Lube (1 qt)
18-2011	GOLDEN SPECTRO Gear Lube (1 cs)
18-2020	GOLDEN SPECTRO Chain Lube (8 oz)
18-2021	GOLDEN SPECTRO Chain Lube (1 cs)
18-2050	SPECTRO FORK FLUID, 5wt (1 pt)
18-2051	SPECTRO FORK FLUID, 5wt (1 cs)
18-2100	SPECTRO FORK FLUID, 10wt (1 pt)
18-2101	SPECTRO FORK FLUID, 10wt (1 cs)

Note: In suspension components with adjustable dampening, always run the lowest weight viscosity oil possible (i.e. 5 weight) to gain the desired dampening effect.



YAMAHA MONOSHOCK SPRINGS

We have special MOTO-X FOX dual rate mono-shock springs to fit the stock Yamaha production Monocross shock. Manufactured in Europe for us where they were developed in International motocross competition, these springs are a true dual stage design with a short light spring and a long heavy spring that go together. These springs will fit all models of Yamaha YZs and ITs from 125cc to 250cc, with the springs recommended for the YZ-125 being a little lighter overall in rate than the stock spring, while for the YZ-250/400 the spring rate is a little heavier overall in rate than stock.

87-1000	FOX monoshock springs, Yamaha YZ-125D, E, F	\$35.00
87-1001	FOX monoshock springs; Yamaha YZ-250/400D, E, F	35.00

SWING ARM PROTECTORS

Here's another new product we came up with to prevent chain drag and wear to your expensive swingarm. Made of heavy-duty polyurethane just like the skate board wheels.

01-2001	Swingarm protector, Suzuki RM-125B	\$4.95
01-2002	Swingarm protector, Yamaha YZ-125D and IT	1.65
01-2003	Swingarm protector, Yamaha YZ-100D, E	1.65
01-2004	Swingarm protector, Yamaha YZ w/aluminum arm	1.65

CHAIN ROLLER KITS

Once again MOTO-X FOX's deep commitment to National and International motocross racing has paid off with a quality product. We discovered the skate board roller wheel as the ideal device for controlling chain movement on long rear wheel travel motocross bikes. Most of the major factory teams have now copied us, incorporating the skate board roller wheels on their bikes. Racing team manager Chuck Tannlund thought up these rollers for us and now we offer them to you in easy bolt-on kits.

01-1000	Chain roller wheel, replacement	\$ 6.95
01-1001	Chain roller kit, Suzuki RM-125/250/400A, B, C	10.95
01-1004	Chain roller kit, Yamaha YZ-125D, E	8.95
01-1005	Chain roller kit, Yamaha YZ-250/400D	11.95
01-1006	Chain roller kit, Honda CR-250R	4.95

YAMAHA RUBBING BLOCKS

Here are replacement rubbing blocks for the new Yamaha YZ F model chain guides made of the tough polyurethane type rubber.

01-1007	Rubbing block, Yamaha YZ F model rear	\$7.50
01-1008	Rubbing block, Yamaha YZ F model front	3.95

TSUBAKI CHAIN

Tsubaki is the best chain we know and we use it on all of our TEAM MOTO-X FOX race bikes. We've yet to experience a chain failure while running Tsubaki chain under normal maintenance procedures. We stock Tsubaki in all popular sizes for dirt bikes.

31-3112	428 x 112 links	\$16.45
31-3120	428 x 120 links	17.60
31-3132	428 x 132 links	19.35
31-0100	520 x 100 links	23.25
31-0104	520 x 104 links	24.10
31-0106	520 x 106 links	24.55
31-0108	520 x 108 links	25.05
31-0110	520 x 110 links	25.50
31-0112	520 x 112 links	25.95
31-0126	520 x 126 links	29.20
31-2104	530 x 104 links	24.10
31-2108	530 x 108 links	25.05
31-2110	530 x 110 links	25.50
31-0011	428 master link	1.00
31-0012	520 master link	1.00
31-0013	530 master link	1.00

REAR SPROCKETS

Reducing unsprung weight improves handling. Our lightweight BLACKLOY rear sprockets are one of the easiest ways to do this. C.T. Alloy makes these to our specs with special lightening holes. BLACKLOY wears best.

50-1393	Maico (59T)	\$32.50
50-1394	Maico (56T)	27.50
50-2500	Husky (53T)	27.50
50-2501	Husky (56T)	27.50
70-1050	Suzuki RM-250/370/400 (50T)	27.50
70-1051	Honda CR-250R (49T)	24.95
70-1053	Yamaha YZ-125D, E (52T)	27.50
70-1052	Yamaha YZ-250/400D, E (50T)	27.50

COUNTERSHAFT SPROCKETS

The best countershaft sprockets made, period! Each is turned from billet steel, precision machined, hardened and polished. They will flat out wear any stock sprocket.

Maico 4-speed			CZ		
51-1394	11T	\$6.95	55-1260	15T	\$9.95
52-1394	12T	6.95	56-1260	16T	9.95
53-1394	13T	6.95			
54-1394	14T	6.95			

Maico 5-speed		
61-0011	11T	\$7.75
61-0012	12T	7.75
61-0013	13T	7.75
61-0014	14T	7.75

Husqvarna-splined		
45-0010	10T	\$7.75
45-0011	11T	7.75
45-0012	12T	7.75
45-0013	13T	7.75
45-0014	14T	7.75
45-0015	15T*	8.90
45-0016	16T*	8.90
45-0017	17T*	8.90

Yamaha TT-500 & 250 and up enduro & MXers		
80-1011	11T	\$5.50
80-1012	12T	5.50
80-1013	13T	5.50
80-1014	14T	5.50
80-1015	15T	5.50
80-1016	16T	5.50
80-1017	17T*	6.50

*These feature lightening holes.

Suzuki RM-250s370s400

75-9013 13T \$5.95

75-9014 14T 5.95

Suzuki RM-125

(see Heavy Duty Kits below)

HEAVY DUTY CHAIN KITS

Larger chain gives you better wear and makes it less likely that you will have chain failure. That is why you need #520 on your RM-125B or C or CR-125. Includes rear and counter sprocket. Order chain separately.

75-8002	Suzuki RM-125B (use #31-0106 chain) (\$22.00)	\$29.95
75-8003	Suzuki RM-125C (use #31-0106 chain) (\$22.00)	29.95
75-8004	Suzuki RM-125N	

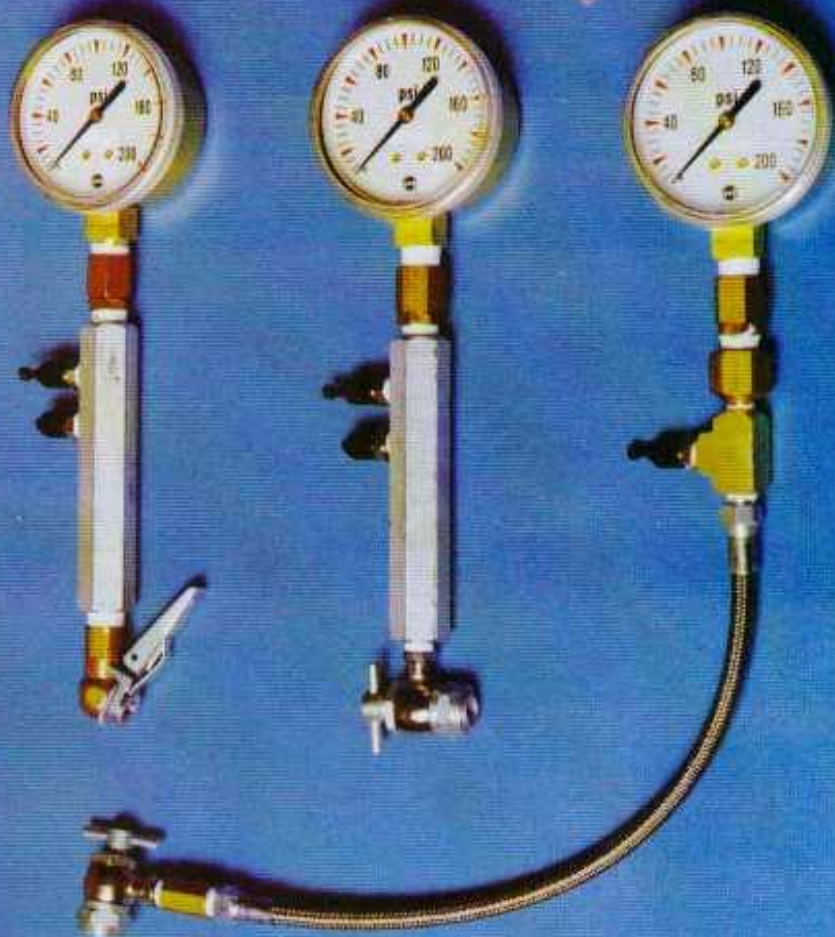
Countersprockets alone:

75-8011	RM-125B, C 11T #520	\$5.95
75-8012	RM-125B, C 12T #520 (in kit)	5.95
45-2011	Husky 11T #530	7.95
45-2012	Husky 12T #530	7.95
45-2013	Husky 13T #530	7.95

FORK PROTECTORS

Keep your pretty baby looking good all the time with these soft vinyl rubber lightweight fork skins. Price: \$8.95 pair.

15-1048	Fork skins, Honda CR-125R
15-1046	Fork skins, Honda CR-250R
15-1052	Fork skins, Honda CR-250R2
15-1053	Fork skins, Kawasaki KX-125
15-1054	Fork skins, Kawasaki KX-250
15-1040	Fork skins, Suzuki RM-80C
15-1056	Fork skins, Suzuki RM-80N
15-1041	Fork skins, Suzuki RM-125B,C
15-1049	Fork skins, Suzuki RM-125N
15-1042	Fork skins, Suzuki RM-250C2, 400C
15-1050	Fork skins, Suzuki RM-250/400N
15-1043	Fork skins, Yamaha YZ-80E
15-1051	Fork skins, Yamaha YZ-80F
15-1044	Fork skins, Yamaha YZ-125E
15-1047	Fork skins, Yamaha YZ-125F
15-1045	Fork skins, Yamaha YZ-250/400E,F



GAS PRESSURE GAUGES

Getting the right gas pressure in your suspension and being able to monitor it accurately is very important. No automotive type tire gauges can do the job because of the small volume of gas you are working with under such high pressures. For this reason we have designed our own MOTO-X FOX gauges for perfect filling and adjustment of your suspension. What the gauge reads is what the pressure is in your suspension and our special chucks assure no pressure is lost when gauges are being attached or removed. Our chucks are leak proof!

HOSE TYPE GAUGE WITH T-HANDLE CHUCK

98-2060	Deluxe hose gauge, 0-60 PSI (for forks)	\$39.50
98-2200	Deluxe hose gauge, 0-200 PSI (for AirShox)	39.50
98-3400	Deluxe hose gauge, 0-400 PSI (for Mono AirShox)	39.50

HANDLE TYPE GAUGE WITH T-HANDLE CHUCK

98-3200	Deluxe handle gauge, 0-200 PSI (for AirShox)	\$39.50
---------	---	---------

HANDLE TYPE GAUGE WITH CLIP-ON CHUCK

98-0060	Handle gauge, 0-60 PSI (for forks)	\$29.95
98-0200	Handle gauge, 0-200 PSI (for AirShox)	29.95

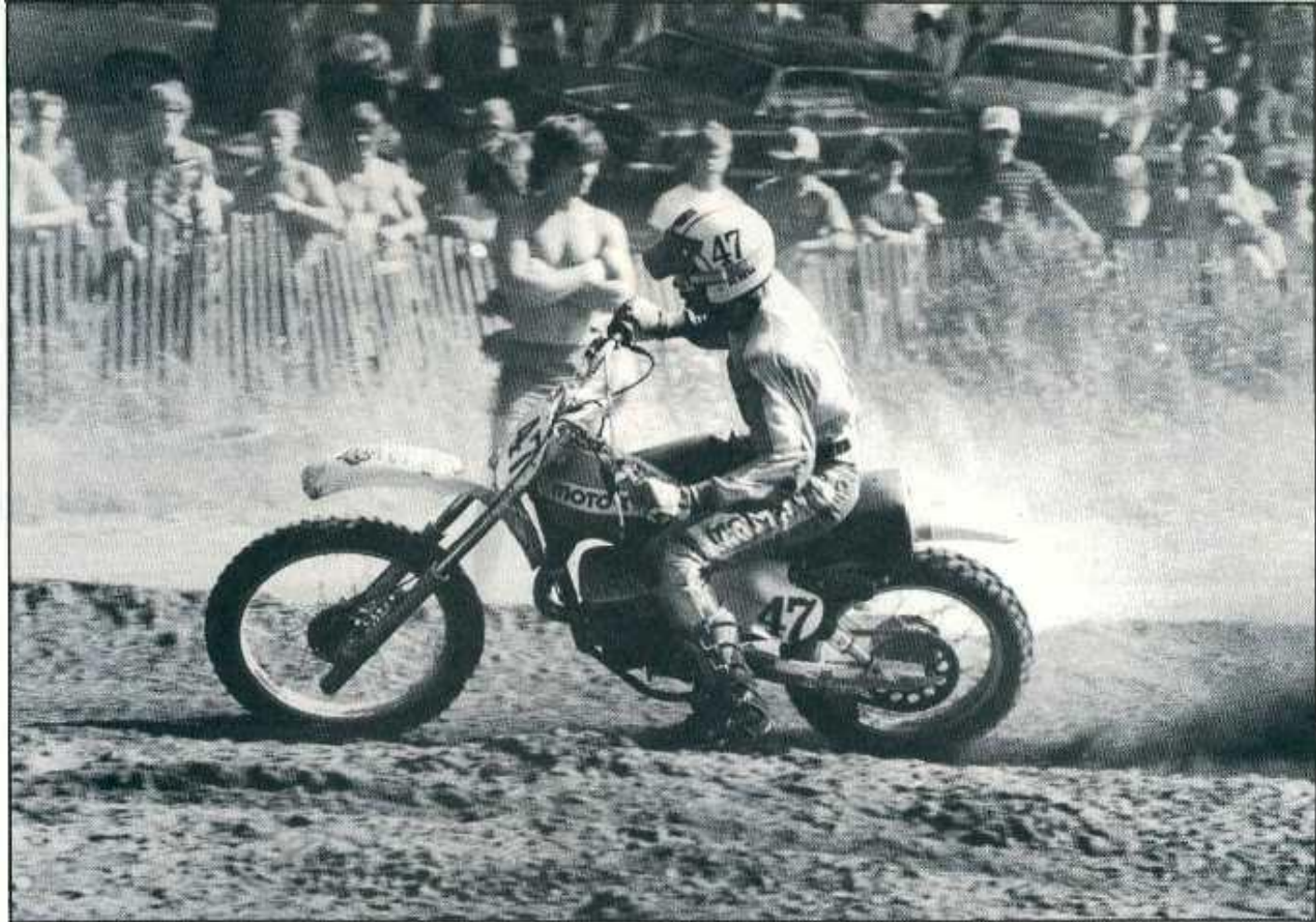
GAUGE PARTS

98-1060	Gauge dial, 0-60 PSI	\$12.15
98-1200	Gauge dial, 0-200 PSI	12.15
98-1400	Gauge dial, 0-400 PSI	12.15
98-2001	T-handle chuck	16.95

LOW PRESSURE PENCIL GAUGES

10-0509	Pencil fork gauge, 0-50 PSI	\$3.95
10-1094	Pencil tire gauge, 0-16 PSI	2.95

For best results MOTO-FOX always recommends that you use Nitrogen gas rather than regular air in your suspension components. This is because Nitrogen is an inert gas which will not cause rust to the internal metal components of shocks or forks, nor will it deteriorate seals and bladders.



ENGINE PERFORMANCE

In its short history, MOTO-X FOX has quickly established itself as the top non-factory team in American motocross. And there have been more than a few times as well, that FOX riders on their modified production bikes have proven themselves to be more than a match for the factory riders on their much more exotic and expensive works bikes. Our results speak for themselves.

When we modify a production bike to make it more competitive in National or just local competition, the ideas and parts which we find out do improve the bike are passed on to you, the customer. We won't sell you anything which TEAM MOTO-X FOX hasn't tested, raced with, and proven to be a worthwhile and reliable performance modification.

Sometimes individual engine components like a larger carburetor or a Mototek CDI ignition can bring about worthwhile performance improvements to your particular bike when used alone. But in most cases a highly-tuned two-stroke engine has its various components designed to be used together as a package. With this in mind we recommend that if you do plan to have your Yamaha or Suzuki engine modified to TEAM MOTO-X FOX specifications you do

so by using the complete recommended package to gain the maximum benefits.

It is also a good idea to check out our books on preparing Yamahas and Suzukis for competition. Besides complete details on engine performance, these books provide information on every aspect of motocross and enduro preparation for a well-prepared and winning bike.

EXPERT PORTING: The ideal porting modification to your cylinder by TEAM MOTO-X FOX. The powerband is improved considerably throughout the RPM range of the engine, allowing for increased tractability, power and engine response. This is the best combination for most tracks and most riders.

NATIONAL PORTING: Recommended for serious Pro riders only. Major reworking of the cylinder brings about a major increase in power at mid and top RPMs. Works best on high-speed tracks for experienced riders who really know how to get their shifts together.

Cylinders should be shipped to MOTO-X FOX with shipping prepaid. Allow 3-4 weeks for modifying, after which we will return your reworked cylinder to you C.O.D.

MOTO-X FOX PORTING

00-0005	"Expert" RM-100B,C	\$ 90
00-0001	"Expert" RM-125B	90
00-0004	"National" RM-125B	195
00-0006	"Expert" RM-125C	90
00-0007	"National" RM-125C	150
00-0002	"Expert" RM-250C,C2	90
00-0008	"Expert" RM-400C	90
00-0011	"Expert" YZ-125D,E,F	110
00-0012	"National" YZ-125D,E	195

MIKUNI CARB KITS

32-0001	32mm for "Expert" Ported RM-100B,C	\$48.25
34-0001	34mm for "Expert" Ported RM-125B,C	48.25
34-0002	34mm for stock port RM-125B,C	52.50
34-0003	34mm for "Expert" Ported YZ-125D,E	52.50
34-0003	34mm for "National" Ported YZ-125D,E	52.50
36-0001	36mm for "National" Ported RM-125B	52.50
36-0002	36mm for "National" Ported RM-125B,C	62.95
36-0003	36mm for Honda CR-250R,R2	72.95

MOTO-X FOX PIPES

34-1729	Suzuki RM-100B,C	\$84.95
34-1730	Suzuki RM-125B,C	84.95
34-1731	Suzuki RM-250C,C2	84.95
34-1737	Suzuki RM-125N	84.95
34-1738	Suzuki PE-250	84.95
34-1736	Honda CR-250R,R2	84.95
34-1834	Yamaha YZ-125D,E POWER BOOST EXHAUST FLANGE	19.95

MOTO-X FOX CYLINDER HEADS

35-0002	Suzuki RM-125B,C	\$79.95
35-0011	Yamaha YZ-125D,E	79.95

MOTOTEK IGNITIONS

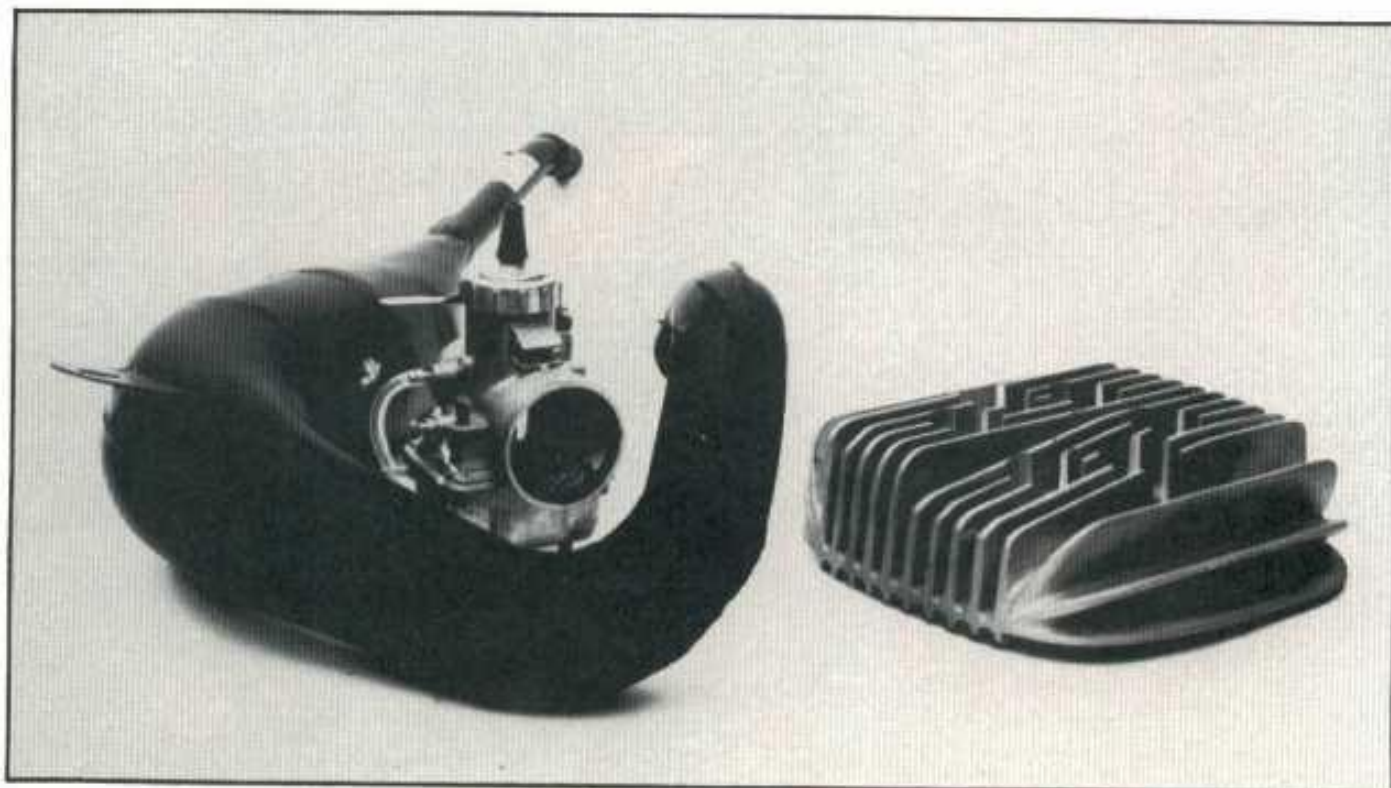
44-3100	Mototek CD-31	\$59.95
44-1500	Mototek CD-15	49.95
44-3101	Mototek CD-31Y	59.95
44-1250	Mototek CD-125	59.95
44-1000	Mototek CD-100	59.95
44-2100	Mototek CD-21	59.95
44-4000	Mototek CD-40	59.95
44-8000	Mototek CD-80	59.95
44-3500	Mototek CD-350	89.95
44-5000	Mototek CD-500	89.95
44-8001	Mototek CD-80Y	59.95

**MOTO-X FOX ENGINE PACKAGE SUGGESTION CHART:**

SUZUKI		Porting	Carb	Pipe	Head	Ignition
RM-100B,C	"Expert"	00-0005	32-0001	34-1729		44-8000
RM-125B	"Expert"	00-0001	34-0001	34-1730	35-0002	44-1250
RM-125B	"National"	00-0004	36-0001	34-1730	35-0002	44-1250
RM-125C	"Expert"	00-0006	34-0001	34-1730	35-0002	44-1250
RM-125C	"National"	00-0007	36-0002	34-1730	35-0002	44-1250
RM-250C,C2	"Expert"	00-0002	stock	34-1731		44-1000
RM-400C	"Expert"	00-0008	stock	stock	stock	stock

YAMAHA

YZ-125D,E,	"Expert"	00-0011	34-0003	34-1834	35-0011	44-2100
YZ-125D,E,	"National"	00-0012	34-0003	34-1834	35-0011	44-2100



EXHAUST SYSTEMS

The TEAM MOTO-X FOX race program with production Suzuki RMs and Yamaha YZs has allowed us to gain more experience than anyone else in the modification of these bikes, including the factory teams themselves. For this reason the specially developed stamped-steel exhaust pipes for Suzuki RMs which we have designed and built, and the POWER BOOST EXHAUST FLANGE for Yamaha YZ-125D and E models are the best possible exhaust system improvements for these bikes. The POWER BOOST EXHAUST FLANGE works so well that Yamaha incorporated it into the cylinders of their newer YZ-125F model bikes.

For bikes that we have less experience with we turn to PROTOPIPE, acknowledged in the field of motocross exhaust systems as one of the top manufacturers.

HONDA

34-1735	Honda CR 250R, R2	\$84.95
77-1730	Honda CR 125, 1976 and 1977, thru frame	\$72.95

HUSQVARNA

45-1730	Husqvarna 125	\$87.50
45-1731	Husqvarna 250	\$87.95
45-1732	Husqvarna 360	\$87.95
45-1734	Husqvarna 390	\$87.95

KAWASAKI

55-1730	KX-125 1974-76	\$79.95
55-1731	KX-250 1974-76	\$79.95

KTM-PENTON

74-1731	KTM 250 MC5	\$82.95
74-1732	KTM 400 MC5	\$82.95

SUZUKI

34-1729	RM-100B, C	\$84.95
34-1730	RM-125B, C	\$84.95
34-1731	RM-250B, C, C2	\$84.95
34-1737	RM-125N	\$84.95
34-1738	PE-250	\$84.95

YAMAHA

MOTO-X FOX POWER BOOST EXHAUST FLANGE for YZ-125D, E models. Works in conjunction with stock pipe for increased tuning effect resulting in more power and torque.

34-1834	POWER BOOST FLANGE	\$19.95
---------	--------------------	---------

CASE SAVER

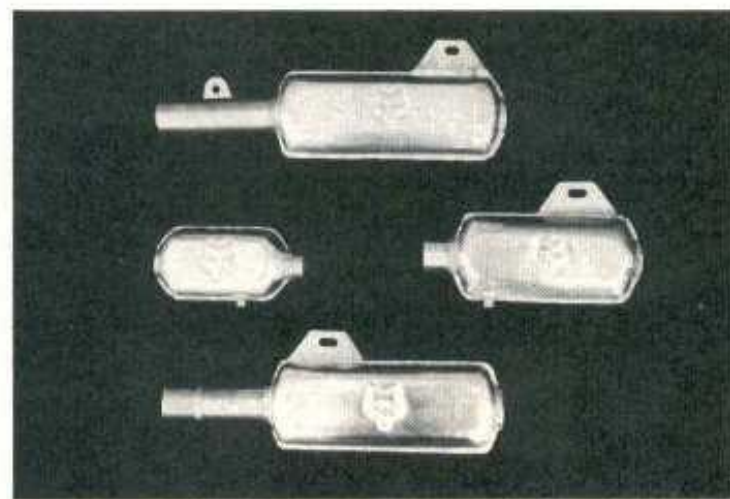
The Case Saver as manufactured by Pro-Tec is designed to bolt on to your engine case around the primary drive sprocket, acting as a case guard to protect your engine from damage in the event of a thrown chain. It's cheap insurance against having to buy a new set of engine cases. Price: \$8.95 each.

01-2020	Case Saver, Yamaha TT-500 all
01-2021	Case Saver, Yamaha YZ-125D, E, F and IT-175D, E, F
01-2022	Case Saver, Yamaha YZ-250/400D and YZ-400E
01-2023	Case Saver, Suzuki RM-250/370/400A, B, C, C2
01-2024	Case Saver, Yamaha YZ-250E, F and YZ-400F
01-2025	Case Saver, Suzuki DR-370
01-2026	Case Saver, Suzuki RM-125C



ALUMINUM MUFFLERS

76-1001	Suzuki RM-125B, C	\$35.00
76-1002	Suzuki RM-250C, C2	35.00
76-1003	Suzuki RM-400C	35.00
76-1004	Yamaha YZ-125D, E	35.00
76-1005	Yamaha YZ-250D, E, F	35.00
76-1006	Yamaha YZ-400D, E, F	35.00
76-1007	Maico 250	35.00
76-1008	Maico 400/450	35.00
76-1009	Honda CR-250R, R2	35.00
76-1010	Suzuki RM-250B	35.00



BOSCH SPARK PLUGS

TEAM MOTO-X FOX uses Bosch spark plugs exclusively in its race bikes. We feel they provide us with the best possible performance while offering the right heat range to meet the specifications required by the bike. Bosch plugs are available in both Standard type and the more expensive Silver electrode type. For our own racing use we select the Silver Bosch which has more resistance to fouling out in a high performance two-stroke engine.

Standard Bosch \$1.60

81-0001	W4A2	1/2" reach
81-0002	W4A1	1/2" reach
81-0011	W4C2	3/4" reach
81-0012	W4C1	3/4" reach

Silver Bosch \$2.95

81-0021	W4AS	1/2" reach
81-0022	W3AS	1/2" reach
81-0031	W4CS	3/4" reach
81-0032	W3CS	3/4" reach
81-0023	W2AS	1/2" reach
81-0033	W2CS	3/4" reach

Application list:

Suzuki RM-250/400 A-N	W3CS
Suzuki RM-125 A-N	W3CS
Yamaha YZ-400 D-F	W4CS
Yamaha YZ-250 D-F	W3CS
Yamaha YZ-125 D-F	W2CS
Yamaha YZ-80	W3CS
KTM 250/400	W2AS
Husky CR-250/390	W4C1
Honda CR-125/250R	W3CS

MAICO CLUTCH KITS

Replace the standard Maico spring washer clutch springs with an easier to operate and maintain coil spring from Simons. Your clutch will be smoother and easier to operate.

60-4006	Simons clutch kit for Maico	\$12.95
---------	-----------------------------	---------

FOLDING SHIFT LEVERS

The folding shift levers first used by enduro riders are now being used by the top motocrossers as well. When you hit a berm or drop your bike the spring-loaded end of the shift lever pivots back, preventing a broken lever, or worse yet, a damaged transmission. These are cheap insurance in helping you to finish a race.

11-0001	Folding shift lever for Yamaha YZs	\$6.95
11-0002	Folding shift lever for Suzuki RMs	\$6.95

HONDA CR-250R MIKUNI

On our TEAM MOTO-X FOX CR-250R and R2 models Hondas we've found that replacing the stock Keihin 36mm carburetor with a Mikuni 36mm carburetor will rid the engine of the "dead spot" it has in the lower RPM range, making the power come on smoother and the throttle more responsive. In effect, the bike becomes easier to ride and less pipey. Top-end power remains the same.

36-0003	Mikuni 36mm carb for Honda CR-250R, R2	\$72.95
---------	--	---------



MOTO-X FOX CHAIN OIL

MOTO-X FOX's chain lube is the best. It goes on in a liquid foam and dries quickly to a highly lubricating clear grease which won't wash off in water or mud.

60-1000	Pro Chain Lube, 4.5 ounce spray can	\$2.25
60-1001	Pro Chain Lube, 17 ounce spray can	3.95

GOLDEN SPECTRO OIL

No two stroke motorcycle oil can out perform Golden Spectro. We've tested a lot of brands and have yet to find another oil with such exceptional anti-wear properties and runs as clean as synthetic Gold Spectro. It doesn't burn or leave deposits in your engine under normal running temperatures, won't foul plugs or rings, and runs cooler than other oils. It works well at almost any mixing ratio from 20:1 to 50:1, but we recommend running Golden Spectro at a ratio of 32:1 for best results.

18-2000	Golden Spectro two-stroke oil, one pint can	\$ 2.25
18-2001	Golden Spectro two-stroke oil, case of 24 cans	49.95

GAS FILTER

The STA-CLEAR gas filter is made of a special plastic which does not yellow and discolor with age. The unit provides adequate fuel flow for all machines and is a universal fit item.

03-9000	STA-CLEAR Gas Filter	\$1.49 ea.
---------	----------------------	------------

AIR FILTERS

POLY-AIR FILTERS

Poly-Air is the number one foam air filter in European motocross. The foam air filter was pioneered by another Dutch company, Twin-Air, but in the last few years Poly-Air has taken over as the favorite filter used by the better mechanics and the top riders like Gaston Rahier, the 125cc World Champion.

One of the reasons for Poly-Air's success is the quality of their construction. Seams never split and the fit is always perfect for your bike's air filter frame when you are replacing your stock filter element with a Poly-Air. But the most important advantage Poly-Air has over any other filter design is its unique construction. This two stage foam filter is manufactured in a unique bonding technique so that both foam layers are held together as one. The two layers cannot be separated, making the Poly-Air easier to install and reducing the possibility of dirt leaking in.

Honda CR-125R	62-2022	\$15.00
Honda CR-250R,R2	62-2009	15.00
Husky 1976,77,78	62-2014	11.00
Husky 1979	62-2023	12.00
KTM 1977	62-2014	11.00
KTM MC-5 1978	62-2013	11.00
Kawasaki KX-125A4, KX-250A4	62-2002	10.00
Maico	62-2012	11.00
Suzuki RM-125B,C	62-2001	10.00
Suzuki RM-125N	62-2020	11.00
Suzuki RM-250/400B,C,C2	62-2002	10.00
Suzuki RM-250/400N	62-2021	11.00
Yamaha YZ-125D,E	62-2003	10.00
Yamaha YZ-125F	62-2019	10.00
Yamaha YZ-250D/400D,E	62-2004	11.00
Yamaha YZ-250E	62-2016	11.00
Yamaha YZ-250/400F	62-2018	10.00

POLY-AIR FILTER FLUID

Now we have Europe's best filter oil to go with Europe's best filter, Poly-Air! Colored red so you can see it in the filter.

62-2000 Poly-Air Filter-Fluid, 1 liter can \$4.75

RM-125B GASKET KITS

Top end gasket kits consisting of the necessary cylinder gaskets for your weekly engine inspection or when parts are replaced. These exact replacement gaskets cost less than corresponding Suzuki parts.

01-0526 Display card of six gasket kits \$11.00



MOTO-X FOX FILTERS

We have our own line of special MOTO-X FOX FILTERS made right here in the U.S.A. to our own exacting specifications, tested and used by our own TEAM MOTO-X FOX riders in their race bikes. FOX FILTERS are an inexpensive, but high quality alternative to the popular Poly-Air filters we handle from Europe.

Where our MOTO-X FOX FILTERS differ from the Poly-Air filters is that ours is a two layer design of special different density foams which separate apart. The advantage of a two stage filter like this is that it is easier to clean thoroughly. Also, on race day a two stage filter is easier to work with as you can easily replace the dirty outer element between motos, while the inner element remains in place on the bike. This saves time and is quite an advantage when the airbox might be filled with mud from a really muddy race, preventing mud or dirt in the airbox from falling into the carburetor intake.

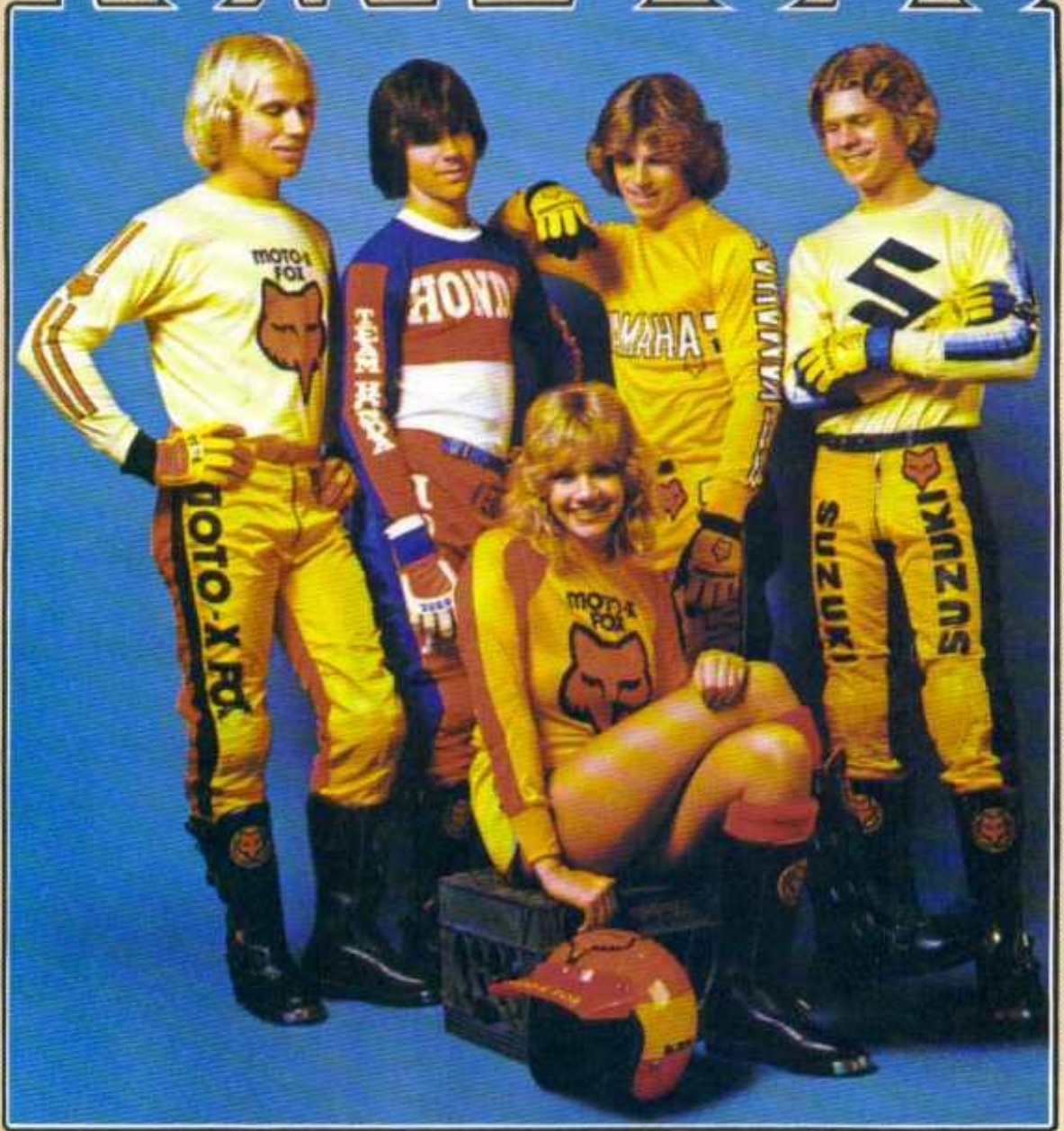


Honda XR/XL-75	61-2008	\$ 3.50
Honda CR-125 1976-78	61-2010	10.50
Honda CR-250R,R2	61-2009	10.50
Husky 1976-1978 CR all	61-2014	10.95
Husky 1979	61-2023	11.50
Kawasaki KX-125A4, KX-250A4	61-2002	10.25
KTM MC-5 pre 1978	61-2014	10.95
KTM MC-5 1978	61-2013	10.50
Maico	61-2012	10.50
Suzuki RM-80B,C,N	61-2011	7.45
Suzuki RM-125B,C	61-2001	10.25
Suzuki RM-125N	61-2020	10.50

Suzuki RM-250/400B,C,C2	61-2002	10.25
Suzuki RM-250/400N	61-2021	10.50
Suzuki DR-370	61-2015	10.25
Yamaha YZ-80E,F	61-2005	9.95
Yamaha YZ-100E	61-2006	16.95
Yamaha YZ-125D,E	61-2003	9.95
Yamaha YZ-125F	61-2019	9.95
Yamaha YZ-250D/400D,E	61-2004	10.25
Yamaha YZ-250E	61-2016	10.25
Yamaha YZ-250/400F	61-2018	10.25
Yamaha TT-500	61-2007	7.95



FOX-YOLOS



FROM MOTO-X FOX AND TEAM YOKO

RIMS AND SPOKES



SUN RIMS

When it comes to strength and reliability in a wheel assembly, SUN rims are the only rims to use. Endorsed by Bob Hannah and used by nearly every major factory team, including MOTO-X FOX, rims from SUN are the only ones which can stand up to the worst abuse possible in professional motocross and enduro riding. These extra-strength alloy rims come pre-drilled for your particular bike and feature the non mud loading design which SUN made famous.

They're available in the standard brushed silver finish, as well as the trick gold anodized finish for a little bit extra money. The wider WM2s for 21 inch front wheels and WM4.5s for 17 and 18 inch rear wheels are a must over narrower stock rims on 250cc and Open class bikes to take full advantage of the broader powerbands and allow increased traction on the modern long-travel bikes.

HEAVY DUTY SPOKE KITS

MOTO-X FOX has the finest heavy duty spoke kits available. Made for us by Buchanans, the leader in the field of motorcycle racing wheel assemblies, heavy duty spokes are one of the most important modifications you can make to your race bike to assure reliability. Much stronger than stock, these spoke kits come complete with nipples. Price: \$20.00 per set.

21 INCH FRONT WHEELS

- 46-1285 Husqvarna conical hub
- 62-1285 Maico conical hub
- 76-1285 Suzuki RM-250/370A full width hub
- 77-1285 Suzuki RM-125/250/400B, C, C2 conical hub
- 78-1287 Yamaha YZ-125/250/400D, E, F conical hub

18 INCH REAR WHEELS

- 45-1285 Husqvarna 1977 and earlier
- 75-1285 Suzuki RM-250/370/400 all full width
- 78-1285 Suzuki RM-125A, B
- 78-1286 Suzuki RM-125C
- 78-1288 Yamaha YZ-125D, E, F
- 78-1289 Yamaha YZ-250/400D, E, F

17 INCH REAR WHEELS

- 17-1287 Husqvarna 1977 and earlier
- 17-1286 KTM/Penton MC5
- 17-1288 Maico
- 17-1285 Suzuki RM-250-s370-s400

SUN RIM APPLICATION CHART

SIZE	SILVER	GOLD
WM1x21	\$38.95	\$41.45
WM2x21	43.30	45.80
WM3x18	42.40	44.90
WM4.5x18	49.30	51.80
WM4.5x17	47.85	50.35

BIKE	MODEL	SIZE	SILVER	GOLD
Bultaco	All	WM1x21	18-3101	17-3101
Bultaco	All	WM2x21	18-3102	17-3102
Can Am	All, 40 hole	WM1x21	18-3111	17-3111
Can Am	All, 40 hole	WM4.5x18	18-3114	17-3114
Can Am	All, 40 hole	WM4.5x17	18-3117	17-3117
Honda	SL & CR 125, MR 175, TL 250	WM1x21	18-3131	17-3131
Honda	CR 125, MR 175, TL 250	WM3x18	18-3133	17-3133
Honda	MT 125, XL 175-350, CR 250	WM1x21	18-3141	17-3141
Honda	MT 125, XL 175-350, CR 250	WM2x21	18-3142	17-3142
Honda	1972 XL 250	WM4.5x18	18-3154	17-3154
Honda	1972 XL 250	WM4.5x17	18-3157	17-3157
Honda	CR 250 R	WM1x21		17-3211
Honda	CR 125 R	WM1x21		17-3212
Honda	CR 250 R	WM4.5x18		17-3214
Honda	CR 125 R	WM3x18		17-3215
Honda	CR 250 R	WM4.5x17		17-3217
Husqvarna	All, w/conical hubs	WM1x21	18-3101	17-3101
Husqvarna	All, w/conical hubs	WM2x21	18-3102	17-3102
Husqvarna	Thru 1977	WM4.5x18	18-3164	17-3164
Husqvarna	Thru 1977	WM4.5x17	18-3167	17-3167
Husqvarna	1978, '79	WM4.5x17		17-3168
Maico	All	WM1x21	18-3101	17-3101
Maico	All	WM2x21	18-3102	17-3102
Maico	All	WM4.5x18	18-3174	17-3174
Maico	All	WM4.5x17	18-3177	17-3177
Ossa	All	WM1x21	18-3141	17-3141
Ossa	All	WM2x21	18-3142	17-3142
KTM-Penton	Thru 1978	WM1x21	18-3141	17-3141
KTM-Penton	Thru 1978	WM2x21	18-3142	17-3142
KTM	1979 MC 80	WM1x21	18-3101	17-3101
KTM	1979 MC 80	WM2x21	18-3102	17-3102
KTM-Penton	Full width hub	WM3x18	18-3153	17-3153
KTM-Penton	36 hole rear hub	WM4.5x18	18-3154	17-3154
KTM-Penton	36 hole rear hub	WM4.5x17	18-3157	17-3157
KTM-Penton	All, 40 hole hub	WM4.5x18	18-3114	17-3114
KTM-Penton	All, 40 hole hub	WM4.5x17	18-3117	17-3117
Suzuki	PE, RM-C 125-400	WM1x21	18-3101	17-3101
Suzuki	PE, RM-C 125-400	WM2x21	18-3102	17-3102
Suzuki	RL 250, TM 100-400, TS 250-400, RM-B 100-370, RM-N 100-400	WM1x21	18-3141	17-3141
Suzuki	Same models above	WM2x21	18-3142	17-3142
Suzuki	TM 100-125, RL 250, RM-B,C, N 100-125	WM3x18	18-3203	17-3203
Suzuki	TS 125-185	WM1x21	18-3131	17-3131
Suzuki	TS 250-400, TM 250-400	WM3x18	18-3133	17-3133
Suzuki	PE, RM-B,C,N 250-400	WM3x18	18-3153	17-3153
Suzuki	Same models above	WM4.5x18	18-3154	17-3154
Suzuki	Same models above	WM4.5x17	18-3157	17-3157
Yamaha	MX 125-175B, TY 250B, YZ 125C	WM1x21	18-3141	17-3141
Yamaha	Same models above	WM2x21	18-3142	17-3142
Yamaha	IT, TT, YZ 125D, E, F, YZ 250- 400C, D, E, F	WM1x21	18-3101	17-3101
Yamaha	Same models above	WM2x21	18-3102	17-3102
Yamaha	IT, TT, YZ 125-400 B,C,D,E,F	WM3x18	18-3203	17-3203
Yamaha	IT, TT, YZ 125-400 D,E,F	WM4.5x18	18-3204	17-3204
Yamaha	Same models above	WM4.5x17	18-3207	17-3207
DRIVE PINS	Set for one rim	18-3500	Price: \$1.50	



METZELER TIRES

More Professional riders choose Metzeler tires for motocross and enduro competition than any other brand. They are the top choice among the Grand Prix and National Championship factory riders for the simple reason Metzeler's out perform any other particular brand of tire under varied course conditions. On hard packed tracks they are the tire to use, and even factory riders contracted to other brands will switch to Metzeler's when the tracks get hard, rough and gnarly.

MOTO-X FOX sells the complete Metzeler tire line which we import directly from the factory in Germany. These aren't the imitations which other accessory companies might sell, but the real winning thing. All our Metzeler's are the long knob variety. They might cost a little more, but Metzeler's from MOTO-X FOX are the best.

For smaller displacement bikes the Metzeler 100/90x18 is a lower profile (less height) version of the 3.75x18 standard size tire, while for bikes with a little more horsepower like a 250cc the 110/90x18 is a low profile tire comparable in width to the 4.00x18 Metzeler.



Part Number	Size	Price, including FET
07-1008	100/90x18	\$56.50
07-1108	110/90x18	60.50
07-3001	3.00x21	52.00
07-3251	3.25x21	55.50
07-3758	3.75x18	58.00
07-4008	4.00x18	61.25
07-4508	4.50x18	62.50
07-5007	5.00x17	73.00

TIRES

Yokohama makes a quality tire at an economy price. Roger DeCoster races with Yokohama, and the new line of tires has benefited from Roger's test riding.

08-2300	Y-902 Yokohama Tire 3.00x21	\$31.02
08-2410	Y-907 Yokohama Tire 4.10x18	35.29
08-2460	Y-907 Yokohama Tire 4.60x18	40.50
08-2500	Y-907 Yokohama Tire 5.00x18	46.00
08-2550	Y-907 Yokohama Tire 5.50x18	46.79
08-5410	Y-905 Yokohama Tire 410/425x14	22.59
08-6275	Y-611 Yokohama Tire 2.75x16	11.50

These last two tires are the good items for mini motocrossers; RM-80, YZ-80 and XR-75.



YOKOHAMA TIRES



RIM LOCKS

Chuck Tannlund, MOTO-XFOX racing team manager feels that Nitto makes the best rim locks around, so that is what we handle. Little things like rim locks can make the difference—that is what has made Chuck such a super wrench.

07-0160	Rim lock 1.60 WM1	\$3.50
07-0185	Rim lock 1.85 WM2	4.30
07-0215	Rim lock 2.15 WM3	4.55
07-0275	Rim lock 2.75 WM4	3.35

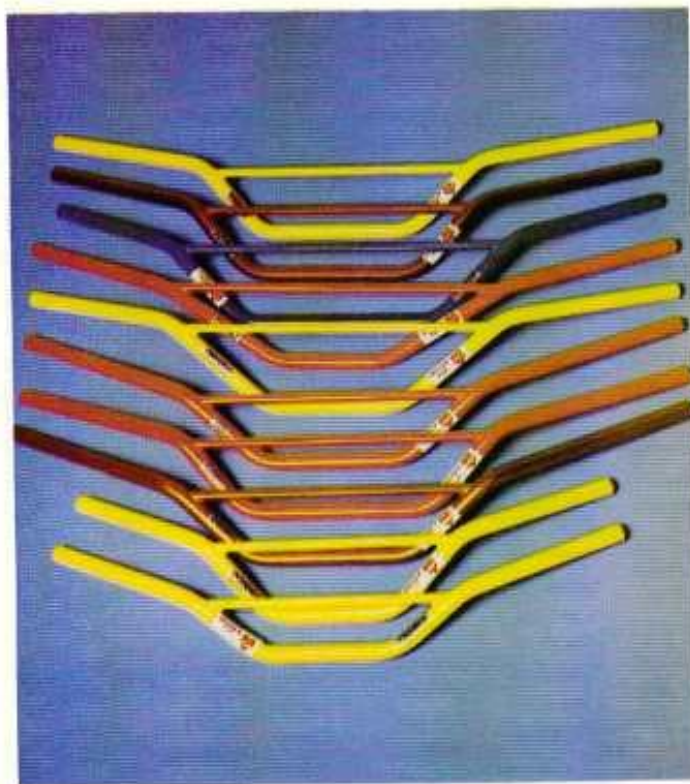
The 2.75 size can be used on the new SUPER-WIDE WM4.5 rims. The 1.60 size is the hot ticket for the WM2 front SUN rims. The 1.85 size works on the stock rear rims that come on RM-125B, C and N, YZ-125D, E and F.

TUBES

08-6000	Tube 275/300/325x16	\$3.95
08-6001	Tube 275/300/360x14	4.25
08-6002	Tube 350/375/410x18	4.90
08-6003	Tube 400/425/460x18	5.70
08-6004	Tube 450/475x18	5.90
08-6005	Tube 275/300x21	4.90
08-6006	Tube 325/350x21	5.20



HANDLEBAR COMPONENTS



FOX WORKS BARS

The neatest looking handlebars on the market are also the best. Made from 4130 treated steel these offer the best strength to weight ratio possible for the money. Available in many different bends similar in shape to the stock brands of handlebars listed below, MOTO-X FOX WORKS BARS are epoxy painted in the brightest, most durable colors you've ever seen.

41-0011	FOX chromemoly bar, Suzuki yellow	\$19.95
41-0012	FOX moly bar, Honda red	19.95
41-0013	FOX moly bar, Husky red	19.95
41-0014	FOX moly bar, CZ blue	19.95
41-0015	FOX moly bar, Yamaha yellow	19.95
41-0016	FOX moly bar, Grand Prix orange	19.95
41-0017	FOX moly bar, mini bike RM-80 yellow	16.95
41-0018	FOX moly bar, mini bike YZ-80 yellow	16.95
41-0019	FOX moly bar, Suzuki works bike yellow	19.95
41-0022	FOX moly bar, Honda works bike candy	22.95
41-0026	FOX moly bar, Grand Prix gold	22.95
41-0029	FOX moly bar, Suzuki works bike gold	22.95

HANDLEBAR GRIPS

No matter what type of riding you do, from observed trials to wide open motocross, your one and only link to controlling your motorcycle is the handlebars and the grips you are using. Doesn't it make sense to have the most comfortable grips possible... ones that don't destroy your hands during a day of racing? MOTO-X FOX has a selection of the world's best grips in soft, pliable rubber.

MOTO-X FOX GRIPS

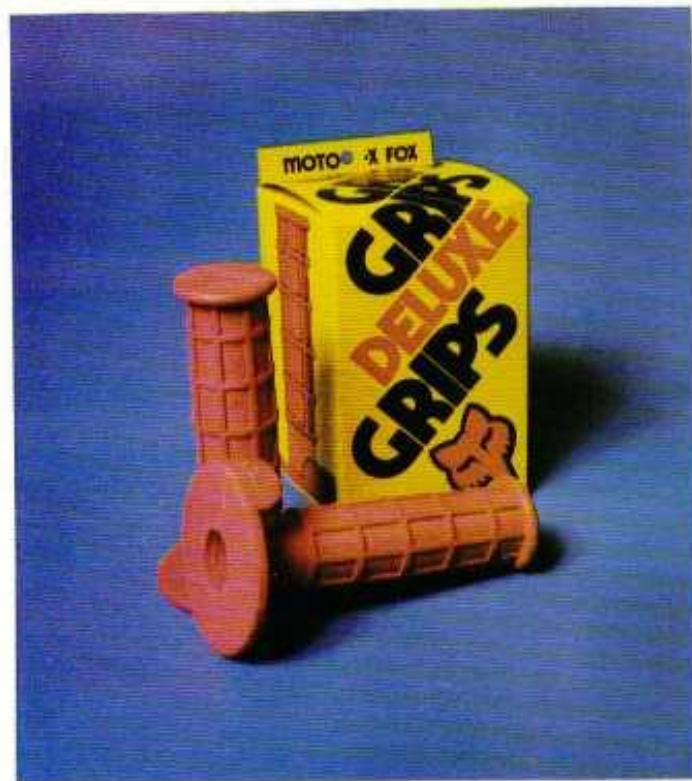
The MOTO-X FOX GRIP features the design favored by more motocross riders than any other over the years. Originally designed by Gary Jones, these grips feature the finest natural rubber patterned in a rectangular grid for the best possible control. They're really soft for the best grip, and made short so that your hand will stay in position while riding. Check out our low price. Price: \$4.00 pair.

50-1060	Yellow	53-1060	Black
51-1060	Blue	54-1060	Green
52-1060	Red		

MOTO-X FOX DELUXE GRIPS

Impress your friends and influence the competition with MOTO-X FOX's exclusive DELUXE GRIP. These grips have all the features of the regular MOTO-X FOX GRIPS like soft rubber and the rectangular grid pattern, but where they differ is that they have a cutaway thumb pad for the side of your hand to keep your hands positioned perfectly on the handlebars for better control. Note: This wider thumb guard may interfere with the new type of short dog-leg control levers. Price: \$4.95

50-1061	Black	50-1063	Yellow
50-1062	Red		



PRESTON PETTY GRAND PRX GRIPS

This trick Grand Prix grip from Preston Petty is designed with the rider's hand in mind. On the leading edge of the grips there are two hexagonal angled flats to conform to your fingers for comfort. The back of the grip is rounded and ribbed to fit against your palm. And the middle of the Grand Prix grip has a bulge to conform to the shape of your palm. With these features you'll be able to hold on longer with less strain. The ribs also make these the ideal mud riding grips which your hands won't slip off of, with the ends of the grips sealed to keep out mud as well.

Price: \$4.00 pair.

06-0010	Silver	06-0013	Yellow
06-0011	Red	06-0014	Blue
06-0012	Black		

PRESTON PETTY BARREL GRIPS

The Barrel grip from Preston Petty features the special bulge in the middle to conform to the shape of your palm. There is a finely-ribbed surface and a special outside ridge which is cut off where the heel of your palm is placed. Another good mud riding grip.

Price: \$4.00 pair.

06-0016	Red	06-0018	Yellow
06-0017	Black	06-0019	Blue

MUDMUCKERS

The greatest thing for enduro riders, cold weather trail riders, or even for motocrossers when the racing gets really wet and muddy. These plastic protectors just clip around your levers and protect your hands while you are riding. Available in TEAM MOTO-X FOX colors of yellow, red and black.

55-1000	Mudmuckers, MOTO-X FOX design one pair	\$14.95
---------	--	---------

DEHANDLERS

These short levers, available in colored plastic or aluminum, allow two finger control of your brake or clutch. Besides saving weight, there is less chance of bending or breaking a lever in a hard fall. Priced per pair.

15-2000	Dehandlers, Honda or Hodaka, red plastic	\$ 8.95
15-2001	Dehandlers, Honda or Hodaka, yellow plastic	8.95
15-2002	Dehandlers, Honda or Hodaka, black plastic	8.95
15-2010	Dehandlers, Suzuki/Yamaha/Kawasaki red plastic	8.95
15-2011	Dehandlers, Suzuki/Yamaha/Kawasaki, yellow plastic	8.95
15-2012	Dehandlers, Suzuki/Yamaha/Kawasaki, black plastic	8.95
15-2030	Dehandlers, Magura lever holder, aluminum	14.95
15-2031	Dehandlers, Honda lever holder, aluminum	14.95
15-2032	Dehandlers, Suzuki/Yamaha/Kawasaki, aluminum	14.95

FOX SHORTY LEVERS

Our own short lever sets at a really reasonable price.

15-2040	FOX SHORTY LEVERS, Honda, aluminum	\$ 4.95
15-2041	FOX SHORTY LEVERS, Suzuki/Yamaha/Kawasaki, aluminum	4.95



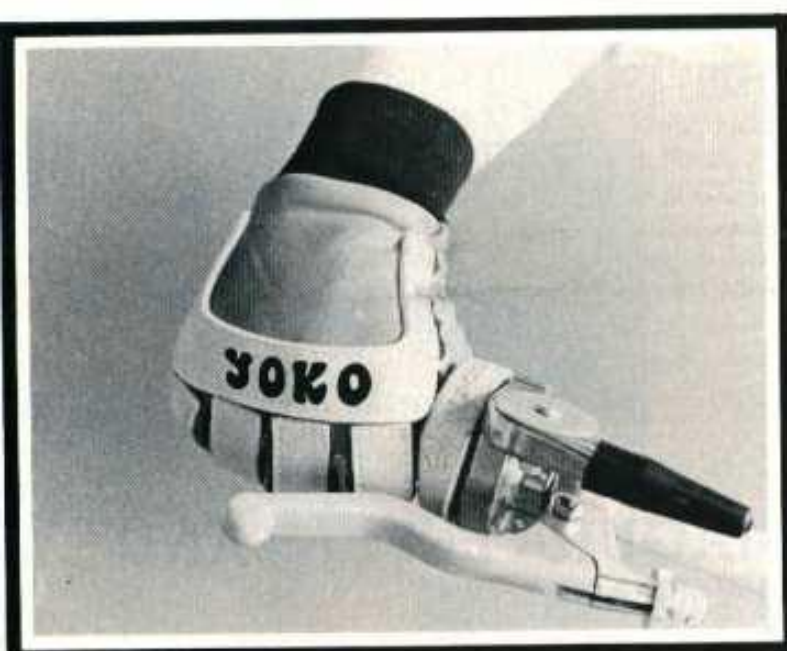
MAGURA LEVERS AND ASSEMBLIES

Magura of Germany offers the finest control levers on the market today. The new Powerpull dog leg style levers fit into your hand comfortably and offer an easier grip than conventional straight levers.

20-3805	Powerpull Clutch Assembly	\$18.95
20-3806	Powerpull Brake Assembly	18.95
20-3808	Magura Kill Button	5.75
20-3802	Powerpull Blade—Magura Clutch	10.35
20-3803	Powerpull Blade—Magura Brake	10.35
20-3804	Powerpull Blade—Honda Clutch	9.25
20-3815	Powerpull Blade—Honda Brake	9.25
20-3816	Powerpull Blade—Yamaha, Suzuki Clutch	9.25
20-3807	Powerpull Blade—Yamaha Suzuki Brake	9.25

Note: The Powerpull Blades listed above will fit the stock Japanese lever holder assemblies. Thus you can get the great powerpull advantage for less expense.





THROTTLE ASSEMBLIES

MOTO-X FOX now handles the two best 90 degree throttle assemblies available for dirt bikes. The advantage of a 90 degree throttle is that the throttle cable is routed more directly towards the bike and carburetor. This lessens the chance of the throttle cable snagging on something while riding or kinking in a fall. It also allows a throttle cable which is shorter and has less bends in it for smoother operation and less likelihood of sticking.

GUNNAR GASSER

The first and original 90 degree throttle assembly was designed by Gunnar Lindstrom. It is a very simple and reliable design that has been proven and now is used by every top factory team in motocross. Every other conventional throttle assembly is obsolete in comparison.

03-1000	Gunnar Gasser throttle assembly (special cable required)	\$17.95
03-1001	Gunnar Gasser cable, 36mm Bing carb	7.50
03-1002	Gunnar Gasser cable, 32-38mm Mikuni and Lectron carbs and 36mm Spanish Bing and Amal	7.50
03-1004	Gunnar Gasser cable, Yamaha YZ-125/400/250	7.50
03-1005	Gunnar Gasser cable, Honda CR-250R, R2	7.50

MAGURA

The new Magura 90 degree throttle assembly is a new concept using an internal ring and pinion nylon gear drive assembly. It costs more, but it really does work smoothly and offers a very positive feel.

20-3083	Magura 90 degree throttle assembly (cable required)	\$25.95
03-2500	Magura 90 degree cable, 36mm Bing (German)	7.50

03-2501	Magura 90 degree cable, Honda CR-250R and Spanish Bing	7.50
03-2502	Magura 90 degree cable, 32-38mm Mikuni, Lectron and EI	7.50
03-2502	Magura 90 degree cable, Yamaha with Mikuni 36mm	7.50

TERRYCABLES

Terrycables with their strong outer sleeve and smooth working inner nylon liner make them the favorite of every major factory rider. Easy to use controls are important for controlling the motorcycle properly, which is why TEAM MOTO-X replaces all the stock cables on the bikes they race with Terrycables. Price: \$7.50 each

Clutch Cables:

Honda, CR-125R	10-0621
Honda, CR-250R, R2	14-1208
Husky, GP Magnesium Case	10-2713
Kawasaki, KX-80 1979	10-2015
Kawasaki, KX-125 1978/79	10-2010
Kawasaki, KX-250/380/400 1978/79	10-2002
KTM 175/250/400 thru 1979	10-1802
Maico, new case & Magnum 1978/79	10-1301
Suzuki, RM-80B, C, N	10-2126
Suzuki, RM-100B, C, N	10-2103
Suzuki, RM-125A, B, C, N	10-2103
Suzuki RM-250/370 & 250/400C2	10-2104
Suzuki, RM-250/400N	10-2136
Yamaha, YZ-80A, B, C, D, E, F	10-1618
Yamaha, YZ-100D, E, F	10-1632
Yamaha, YZ-125D	10-1632
Yamaha, YZ-125E, F	10-1643
Yamaha, YZ250/400D & 400E	10-1633
Yamaha, YZ-250E	10-1642
Yamaha, YZ-250/400F	10-1646

Brake Cables:

Honda, CR-125R	14-1209
Honda, CR-250, R2	14-1209
Husky, GP '75 & '76 conical hub	10-2701
Husky, CR-250/390 '77-'79	10-2702
Kawasaki, KX-80 1979	10-2016
Kawasaki, KX-125/250/400 1979	10-2014
KTM with 8mm adjuster, 1976/77	10-1804
KTM with 8mm adjuster, 1978/79	10-2206
Maico 1977/78/79	10-1302
Suzuki, RM-80B, C, N	10-2127
Suzuki, RM-125B, C	10-2125
Suzuki, RM-125N	10-2107
Suzuki, RM-250/400C, N	10-2107
Yamaha, YZ-80D, E, F	10-1638
Yamaha, YZ-100E, F	10-1641
Yamaha, YZ-125/250/400D	10-1634
Yamaha, YZ-125/250/400E, F	10-1635

Throttle Cables:

Gunnar Gasser-36 Bing (German)	03-1001
Gunnar Gasser-Lectron, EI, 32-36 Mikuni	03-1002
Gunnar Gasser-Yamaha 36mm Mikuni	03-1004
Gunnar Gasser-CR-250R, 36 Bing (Spanish)	03-1005
Straight Pull Magura-36 Bing (German)	03-2500
Straight Pull Magura-CR-250R, 36 Bing (Spanish)	03-2501

Straight Pull Magura-Lecton, El,	
32-38 Mikuni	03-2502
Straight Pull Magura-Yamaha 36mm	
Mikuni	03-2503
Plastic Magura-36 Bing	21-3800
Plastic Magura-32/34 Mikuni	22-3800
Plastic Magura-36/38 Mikuni	23-3800
Honda, CR-125R	10-0623
Honda, CR-250R, R2	14-1210
Husky, 1/5 turn Swedish-36/38 Bing	
(pre '78)	21-3802
Husky, Swedish-32/38 Mikuni 1978	10-0831
Husky, Gunnar Gasser-38 Mikuni	
1979	03-1002

Kawasaki, KX-80 1979	10-2017
Kawasaki, KX-125 1978/79	10-2013
Kawasaki, KX-250/380 1978/79	10-2012
Suzuki, RM-80B, C, N	10-2128
Suzuki, RM-100B, C	10-2117
Suzuki, RM-100N	10-2135
Suzuki, RM-125B, C	10-2117
Suzuki, RM-125N	10-2135
Suzuki, 250/370 & 250/400B, C, C2	10-2118
Suzuki, RM-250/400N	10-2138
Yamaha, YZ-80D, E, F,	10-1637
Yamaha, YZ-100D, E, F,	10-1644
Yamaha, YZ-125/250/400D, E, F	15-1636

FENDERS AND NUMBER PLATES

PRESTON PETTY FENDERS

Fenders are what made Preston Petty famous and we carry his two most popular models, the MX rear and the Tony DiStefano endorsed MX wide front fender. Preston guarantees his fenders for a year of the worst possible abuse, including use on any old TM-400 Cyclone Suzuki.

COLOR	MX REAR	MX FRONT
	\$13.95	\$14.95
White	05-0013	05-0012
Yellow	05-0043	05-0042
Red	05-0053	05-0052
Blue	05-0063	05-0062

FACTORY NUMBER PLATES

These polyurethane plastic front numberplates for your bike are just like those used by the factory teams and MOTO-X FOX on their race bikes. Available in three colors with either single or double cable guards, these are your best insurance for preventing a snagged handlebar cable on your front forks.

06-0021	Number plate, single guard, white	\$2.95
06-0022	Number plate, single guard, yellow	2.95
06-0023	Number plate, single guard, red	2.95
06-0030	Number plate, double guard, white	3.95
06-0031	Number plate, double guard, yellow	3.95
06-0032	Number plate, double guard, red	3.95



FIM NUMBERPANELS

These are the latest type side panel and number plate combinations introduced for International class motocross in 1978 and now required in AMA Professional competition beginning with the 1979 racing season. Our MOTO-X FOX FIM side panels are made of lightweight unbreakable ABS plastic and are molded to conform to your particular bike perfectly without any interference to body movement. Price: \$19.95 per set.

- 73-0001 FIM side panels, White, Suzuki RM-100/400A, B, C, C2
- 73-0002 FIM side panels, Yellow, Suzuki RM-100/400A, B, C, C2
- 73-0003 FIM side panels, White, Maico Magnum
- 73-0004 FIM side panels, Red, Maico Magnum
- 73-0005 FIM side panels, White, Yamaha YZ-125D, E
- 73-0006 FIM side panels, Yellow, Yamaha YZ-125D, E
- 73-0007 FIM side panels, White, Honda CR-250R, R2
- 73-0008 FIM side panels, Red, Honda CR-250R, R2
- 73-0009 FIM side panels, White, Honda CR-125R
- 73-0010 FIM side panels, Red, Honda CR-125R
- 73-0011 FIM side panels, White, Suzuki RM-125N
- 73-0012 FIM side panels, Yellow, Suzuki RM-125N
- 73-0013 FIM side panels, White, Suzuki RM-250/400N
- 73-0014 FIM side panels, Yellow, Suzuki RM-250/400N
- 73-0015 FIM side panels, White, Yamaha YZ-125F
- 73-0016 FIM side panels, Yellow, Yamaha YZ-125F
- 73-0017 FIM side panels, White, Yamaha YZ-250/400F
- 73-0018 FIM side panels, Yellow, Yamaha YZ-250/400F
- 73-0019 FIM side panels, White, Kawasaki KX-125/250
- 73-0023 FIM side panels, White, Suzuki RM-80N
- 73-0024 FIM side panels, Yellow, Suzuki RM-80N
- 73-0025 FIM side panels, White, Yamaha YZ-80D, E, F
- 73-0026 FIM side panels, Yellow, Yamaha YZ-80D, E, F
- 73-0027 FIM side panels, White, Yamaha YZ-250/400D, E
- 73-0028 FIM side panels, Yellow, Yamaha YZ-250/400D, E
- 73-0029 FIM side panels, White, Yamaha IT-125/175D, E, F
- 73-0030 FIM side panels, Blue, Yamaha IT-125/175, D, E, F
- 73-0031 FIM side panels, White, Yamaha YZ-100D, E, F
- 73-0032 FIM side panels, Yellow, Yamaha YZ-100D, E, F

NUMBER PLATE BACKGROUNDS

Color backgrounds on numberplates are now required for FIM and AMA competition. Give your bike that International touch for local races as well with these plastic adhesive numberplate backgrounds which won't peel off at the local car wash. Black is for the 125cc class, green for 250cc bikes, and yellow for Open class bikes. Pre-cut to FIM and AMA number plate dimensions, Packaged three to a set. Price: \$4.95 per set.

- 03-0100 White number plate background
- 03-0101 Black number plate background
- 03-0102 Yellow number plate background
- 03-0103 Green number plate background



TRICK NUMBERS

Specially cut numbers just like the Pros use are the neatest looking you can get. They are available in two colors, black or white, and two sizes, large for bike number plates and small for helmets. When ordering, please include complete description of quantity, Color, Size and "Number" wanted. Price: \$0.29 each for small, \$0.39 each for large.

DEALER PACKS TRICK NUMBERS

Complete number sets for dealers.

- 03-0040 Trick Number set, small black
- 03-0041 Trick Number set, large black
- 03-0042 Trick Number set, small white
- 03-0043 Trick Number set, large white
- 03-0044 Thin Trick Number set, large black
- 03-0045 Thin Trick Number set, large white

THIN TRICK NUMBERS

Similar in design to the Trick Numbers, but Thin Trick Numbers are extra narrow so you can fit those extra long three digit professional numbers onto your bike's number plate. When ordering please use a complete description including Quantity, Color and "Number" wanted. Available in large size only in black or white colors. Price: \$0.39 each

Number	Black Small	Black Large	White Small	White Large	Thin Black	Thin White
0	03-0000	03-0010	03-0020	03-0030	03-0050	03-0060
1	03-0001	03-0011	03-0021	03-0031	03-0051	03-0061
2	03-0002	03-0012	03-0022	03-0032	03-0052	03-0062
3	03-0003	03-0013	03-0023	03-0033	03-0053	03-0063
4	03-0004	03-0014	03-0024	03-0034	03-0054	03-0064
5	03-0005	03-0015	03-0025	03-0035	03-0055	03-0065
6	03-0006	03-0016	03-0026	03-0036	03-0056	03-0066
7	03-0007	03-0017	03-0027	03-0037	03-0057	03-0067
8	03-0008	03-0018	03-0028	03-0038	03-0058	03-0068
9	03-0009	03-0019	03-0029	03-0039	03-0059	03-0069

BIKE STANDS

STANDMASTER I is the perfect tool for parking motocross bikes for repair work or storage. It is fully adjustable in height and width to fit any dirt bike. It is unique in that it folds flat to a compact size for storage and shipping. These stands are made of heavy gauge steel for rugged use. This stand is an excellent item for dealers to use to display motocross bikes in their store.

03-9001 STANDMASTER I \$22.95

STANDMASTER II is another high quality stand made of heavy duty materials for rigidity and long life. This stand employs fulcrum-lever action to raise the front or the rear of the bike. Again the stand is fully adjustable to fit any dirt bike. The tips are plastic coated to protect the bike frame and prevent slippage. The handle is removable for easy shipment, yet is firmly locked in place for use.

03-9002 STANDMASTER II \$27.95

BIKE COVER

Protect your bike with a team cycle cover. These good looking naugahyde covers mark you as a proud owner of your brand.

02-0001	Maico (Red/yellow-black)	\$18.00
02-0005	Husky (Black/yellow)	18.00
02-0006	Honda (Silver/black-red)	18.00
02-0007	Yamaha (Yellow/black)	18.00
02-0008	Kawasaki (Black/green-white)	18.00
02-0009	Suzuki (Yellow/black)	18.00
02-0011	MOTO-X FOX (Red/yellow/ orange-black)	20.00

MOTO-X FOX SEAT COVERS

These are our best quality replacement seat covers which also come with the MOTO-X FOX logo silkscreened on each side. They are available only in stock height to fit the listed bikes. Price: \$10.95 each.

45-2654	FOX seat cover, Yamaha IT-175/250/400
45-2658	FOX seat cover, Honda CR-250R, R2
45-2659	FOX seat cover, Suzuki RM-125/250/370/400A, B, C, C2
45-2660	FOX seat cover, Suzuki RM-80C
45-2661	FOX seat cover, Yamaha YZ-125/250/400D, E
45-2662	FOX seat cover, Yamaha YZ-250F
45-2663	FOX seat cover, Yamaha YZ-125F
45-2664	FOX seat cover, Suzuki RM-125N
45-2665	FOX seat cover, Suzuki RM-80N
45-2666	FOX seat cover, Yamaha YZ-80F
45-2667	FOX seat cover, Honda CR-125R
45-2668	FOX seat cover, Maico Magnum

TALL SEAT KITS

Increase the height of your stock bike seat with these seat kits. Included is the required amount of extra foam padding, a new tall seat cover, glue and instructions. Price: \$19.95 per kit.

40-1501	Tall seat kit, Maico AW
40-1503	Tall seat kit, Husky GP
40-1504	Tall seat kit, Suzuki RM-125/250/400
40-1505	Tall seat kit, Yamaha YZ-125/250/400
40-1506	Tall seat kit, Honda CR-125
40-1508	Tall seat kit, Honda CR-250R, R2

REPLACEMENT SEAT COVERS

These replacement seat covers will fit both our tall seat kits and the bike's stock seat with a little trimming off of the excess material.

45-1652	Seat cover, Husky GP	\$11.95
45-1657	Seat cover, Honda CR-125	11.95
45-1658	Seat cover, Honda CR-250R, R2	11.95
45-1659	Seat cover, Suzuki RM-125/250/400	11.95
45-1661	Seat cover, Yamaha YZ-125/250/400	11.95

TEAM MOTO-X FOX TANK STICKERS



Give your bike the TEAM MOTO-X FOX look with these mylar adhesive gas tank stickers. They not only keep your bike looking sharp and neat, but they let everyone know you're part of the winningest non-factory team in motocross today. They come in TEAM FOX colors or red, yellow and orange and are cut to fit your particular bike. Package of two (left and right side). Price: \$7.95 pair.

Honda CR-125R	17-0049
Honda CR-250R, R2	17-0044
Maico Magnum	17-0045
Suzuki RM-80N	17-0060
Suzuki RM-125C	17-0040
Suzuki RM-125N	17-0061
Suzuki RM-250/400C	17-0042
Suzuki RM-250/400N	17-0062
Yamaha YZ-80F	17-0047
Yamaha YZ-125D, E	17-0041
Yamaha YZ-125F	17-0048
Yamaha YZ-250/400D, E	17-0043
Yamaha YZ-250/400F	17-0046
MOTO-X FOX lettering only	
\$1.00	17-0004

THE CHAMPION'S CHOICE

MOTO-X FOX CLOTHING

MOTO-X FOX is the leader in motocross in the U.S.A. and, together with Team YOKO from Finland, we've expanded our line of racing clothing to be the best anywhere. Now you can not only have a choice of various colors and bike brands, but different designs and materials as well. Now you can select the racing apparel which suits you best, your riding conditions, the weather, and your pocket book! Only MOTO-X FOX offers you such a wide range of stylish and good fitting protection.

FOXY DUDS are made exclusively for MOTO-X FOX by YOKO of Finland. It's Finland which has been long acknowledged as the leader in motocross pants and gloves. The combination nylon/leather pants were originated there as were the fully padded soft leather gloves. Team YOKO puts their experience to use in the products they make for us.

For the latest in motocross apparel, YOKO has gone a step farther than anyone else in the design of the new lineup of SUPERFOX PANTS and SUPERFOX GLOVES. New materials used in new ways highlight the SUPERFOX line of clothing which sets new standards for comfort, light weight, style and price. Our top MOTO-X FOX riders like Brad Lackey, Rex Staten and Mark Barnett know they're the best and so will you. And now, we are proud to announce that the great new

SUPERFOX lineup is also available in youth sizes for the mini racers as well. Look to MOTO-X FOX, the leader in the sport of motocross.



**THE
WORKS
BIKES**

CARBURETION

**FINE TUNING
THE SUSPENSION**

**MOTO-X FOX
GUIDE TO
PREPARING THE
RM AND PE
SUZUKI FOR
COMPETITION**
WITH JIM GIANATSI

**BASIC
COMPETITION
PREPARATION**

MOTO-X FOX TUNING MANUALS

There is a lot more to going racing than buying a new motocrosser at your local dealer, filling it up with gas and taking it out to the track on Sunday. Chances are you'll finish your first couple of laps and then things will start to go wrong... everything from loose or broken spokes to perhaps a seized engine could put a stop to your riding.

Preparing a bike for competition, even a new stocker, requires a lot of preparation. There are little secrets and tricks you have to learn in setting-up your bike besides just the normal maintenance procedures mentioned in the owner's manual.

And then once you become an accomplished rider, reaching the capabilities of your bike and desiring to enter a tougher class of competition with the better Amateur or Professional riders, chances are you'll need to make some serious modifications to the engine and suspension of your bike if you want to be competitive in equipment with what everyone else is using.

Up until now, learning how to set up a motocross or enduro bike for serious competition has been somewhat of a secret, forcing you to learn from experience and your friends what changes to your bike will work the best. That's great if you have a lot of time and money to experiment and test new things, but certainly not as much fun as being able to finish every race you enter on a well performing and good handling bike.

That's why we at MOTO-X FOX have come up with a couple of books on preparing the popular Suzuki and Yamaha race bikes for competition. We have had more experience and success racing production bikes like the RMs and YZs than any other company including the factory teams from Suzuki and Yamaha themselves! But we have also worked closely with the factory teams, their top riders and mechanics to bring you these competition manuals which contain everything you need to know to turn your production bike into a machine just as competitive as the exotic factory works bikes if you want to.

We have worked together with Jim Gianatsis, America's top motocross journalist and photographer, in making these two books for you. **THE MOTO-X FOX GUIDE TO PREPARING THE RM AND PE SUZUKI FOR COMPETITION** and **THE MOTO-X FOX GUIDE TO PREPARING THE YZ AND IT YAMAHA FOR COMPETITION** contain all the secrets, tricks, and just plain standard procedures you need to know to maintain and race a competitive motocross or enduro bike. You'll find chapters on everything from the history of Team Suzuki and Team Yamaha, to chapters on setting up your suspension and porting cylinders.

If you own a Suzuki or Yamaha dirt bike, you won't want to be without these informative and exciting manuals. The action pictures alone of all your favorite Team Suzuki and Team Yamaha stars are worth getting the manual for!



- | | | |
|---------|--|--------|
| 50-1902 | PREPARING THE RM AND PE SUZUKI FOR COMPETITION | \$5.95 |
| 50-1903 | PREPARING THE YZ AND IT YAMAHA FOR COMPETITION | 5.95 |



ORDERS

ORDERING INFORMATION: Parts and accessories may be ordered over the phone or through the mail. Dealers should have their MOTO-X FOX CUSTOMER NUMBER handy to help us save time. Mail-in orders should be sent to:

MOTO-X FOX
520 McGlinchey Lane
Campbell, California
95008 USA

PHONE ORDERS: Two phone lines are available for phone orders.

(800) 538-6854 This is a toll-free Watts Line for all states except California, Alaska and Hawaii. Please do not use this line for requesting information.

(408) 371-1221 This is the order line for California, Alaska and Hawaii. It may also be used for requesting information on part assembly, bike preparation, etc.

BUSINESS HOURS: Mondays through Fridays, 8 AM to 5 PM. Closed weekends and all UPS holidays.

MINIMUM ORDER: Minimum order is \$25.00 for retail customers and dealers. The following items are less than \$25.00 but will be handled for retail customers if the following instructions are followed:

1. Suzuki or Yamaha competition manuals will be mailed if the customer sends \$5.95 plus \$1.00 handling.
2. STICKIE KITS #17-0007 will be shipped for \$3.00 if the customer includes a self-addressed stamped envelope with his payment of \$3.00.
3. POSTERS, Brad Lackey or MOTO-X FOX "Priest" Poster will be mailed if \$2.00 for each poster desired is sent in.

PRICES: Due to the unstable nature of the foreign exchange rate and the high inflation rate of our own economy, prices are subject to change without notice. We will be happy to quote current prices on the phone at any time.

TERMS: C.O.D. or prepaid. We have no open accounts.

SHIPPING: We ship UPS Blue Label whenever possible. If you wish us to ship your order by other means please inform us when ordering.

RETURNS: We will not accept any returned goods without prior approval. Returned merchandise must be accompanied with the following:

1. A RETURN AUTHORIZATION NUMBER (phone and ask for this).
2. A copy of the original invoice the goods were

purchased on. This is required for two reasons.

- i. To establish the date of purchase. Without this information we will assume the purchase is over 30 days ago, hence not eligible for complete refund.
 - ii. To establish the price paid. Without this information we will assume the price paid was the lowest price sold during a sale or promotion.
3. A note of explanation for the return. Authorized returns will be handled by an immediate REFUND CHECK unless repair or replacement is requested. Goods returned within 30 days of purchase will be eligible for a complete refund. Goods returned after 30 days will be subject to a 20 percent restocking charge. DISCONTINUED ITEMS: Items kept longer than 30 days which we have discontinued will not be eligible for return.

BACKORDERS:

1. Check your invoice with each order received.
2. All backorders are verified by notation in the "QTY B.O." column of the invoice. If your invoice has no notation in this column, then you do NOT have a backorder with us.
3. We normally only backorder major items such as shocks, forks or swingarms.
4. To CANCEL A BACKORDER we must have the following information:
 - a. Customer number and name.
 - b. Original invoice number of backorder.
 - c. Part number to be canceled.

COMPLAINTS AND SUGGESTIONS: Please contact me directly. I want to know of any problems you may have or suggestions for improving our service to you. Thank you, Geoffrey Fox, President.





FOREIGN ORDERS: Must be accompanied by prepayment in U.S. funds drawable on an American bank. Minimum foreign dealer order: \$250. Smaller orders will require \$10.00 for handling. For the countries listed below please deal directly with the MOTO-X FOX representatives.

ARGENTINA

Imonob S.A.
Venezuela 2259
1096 Capital Federal
Buenos Aires
Argentina

AUSTRALIA

Competition Developments
Pty. Ltd.
P.O. Box 228
Eastwood, NSW 2122

CANADA

Aurora Cycle Supply
70 Fairway Drive
Aurora, Ontario L4G 2H1
R&M Motocross Specialties
1441 Kingsway
Vancouver, BC V5N 2R5

COSTA RICA

Moto Parts Ltd.
APDO 3199
San Jose

ENGLAND

MOTO-X FOX U.K. LTD.
3 Queen Street
Barnard Castle
Co. Durham DL12 8JL

FRANCE

T.T. Import
43390 Auxon

**HOLLAND, BELGIUM,
GERMANY, SWITZERLAND
and AUSTRIA**

Pierre Karsmakers U.S.A. B.V.
Hertenlaan 12
Waalre, HOLLAND

NEW ZEALAND

Sportspromotion Ltd.
P.O. Box 68167
Auckland

HONG KONG

Wings Motorcycles Co.
Kil 2070 Beech Street
Taikoktsui, Kowloon
Hong Kong

SINGAPORE

P.T. Indianapolis
91 Coronation Road West
Singapore 10

THAILAND

Vichai Bangkok Ltd. Part
29/5 Charoesinkhet, 3 Road
Pomprab Bangkok

PHILIPPINES

Motorcycle Development &
Machineries Co., Inc.
San Rafael St.
San Antonio Valley No. 1
Paranaque
Metro Manila

PORTUGAL

Metalurgia Casal, SARL
Apartado 83
Aveiro

SPAIN

R. Henriquez
Apartado 14.875
Madrid

VENEZUELA

Moto Trail C.A.
Av. La Trinidad
Las Mercedes
Caracas

NORWAY

Snellingen & Smestad & Co.
Ostenajovelen 59
Oslo



Famous FOX SHOX are now available for mini-motocross use. Our special SOFT dampening and 37/50 and 42/60 springs do the trick. For the YZ-80E we have developed a special FOX SHOCK with Reservoir.

38-1299	FOX SHOX 13" SOFT	\$109.00
38-1349	FOX SHOX 13 1/4" SOFT	109.00
38-1424	FOX SHOX 14 1/4" SOFT	109.00
38-1302	FOX MINI MONO SHOX for Yamaha YZ-80E. Increases travel from 4.5 ins. to 6.5 ins. at rear wheel. Price: \$89.00	
38-1477	FOX MINI MONO SHOX for Yamaha YZ-80F. Increases travel from 7.5 ins. to 8.5 ins. at rear wheel. Price: \$95.00	

Springs	Order	87-1450	\$ 5.95
	plus	87-0050	16.50
42/60	Order	87-1450	
	plus	87-0060	16.50

Our aluminum swingarms save weight, increase rigidity and due to their extended length they improve stability. They also look neat.

97-1001	YZ-80D Aluminum swingarm	99.00
97-1703	Swingarm, Suzuki RM-80N	109.00
	(w/stock 14.25 in. shocks)	

GLOVES

These SUPERFOX/YOKO gloves are the best quality available for the young motocrosser. All the same features as the adult version except no palm padding due to small hand size.

\$19.95 pair.

20-1105	Red/yellow (5) S	20-1205	blue/yellow (5) S
20-1106	Red/yellow (6) M	20-1206	blue/yellow (6) M
20-1107	Red/yellow (7) L	20-1207	blue/yellow (7) L

FOX MINI RACING

Yokohama MINI-DIGGER tires are the hot set-up for minicrossing.

TUBES:	08-6275	2.75x16 Front Y-611	\$11.50
	08-5410	4.10/42.25x14 Y-905	22.59
	08-6001	275/300/360x14 Rear	\$4.25
	08-6000	275/300/325x16 Front	3.95



MOTO-X FOX

520 McGlinchy Lane, Campbell, Calif. 95008
(408) 371-1221 for information & California orders
(800) 538-6854 Toll free outside California line for orders only.
Telex: 171124 MOTOX FOX CMPL

All FOX products available through
your local dealer:

YOKO GLOVES

YOKO SUPERFOX GLOVES

Here is the newest idea in gloves being introduced by MOTO-X FOX. The design is so fantastic that other manufacturers are sure to copy it, but only we will have the original. The SUPERFOX model is so lightweight and comfortable you'll hardly know you have them on. What makes these gloves so nice is the synthetic cloth backing which is cooler to reduce sweating, allows the glove to fit better, and sheds water under rain and mud conditions. Inside thumb protection and padding is even greater with the SUPERFOX than on the GRAND PRIX model. And lastly, a snug fitting wrist band insures that mud and water stay out during a wet race or enduro. Price: \$25.50 per pair adult sizes, \$19.95 per pair children sizes.

YOKO GRAND PRIX GLOVES

These are the world famous YOKO gloves favored by all the top riders for their strong protection. Sturdy, yet supple, all-leather construction with double leather in critical areas like around the thumb to prevent blisters are some of the features. The palms are well padded, while the backs offer additional protection with shock absorbent rubber padding for your fingers and back of the hand. Price: \$25.95 per pair.



SUPERFOX GLOVES: \$25.50

	S (8)	M (9)	L (10)	XL (11)
Red/Yellow	20-1108	20-1109	20-1110	20-1111
Blue/Yellow	20-1208	20-1209	20-1210	20-1211
Black/Yellow	20-1308	20-1309	20-1310	20-1311
Red/White/Blue	20-1408	20-1409	20-1410	20-1411

GRAND PRIX GLOVES: \$25.95

	S (8)	M (9)	L (10)	XL (11)
Red/White/Blue	20-0108	20-0109	20-0110	20-0111
Yellow/Black	20-0208	20-0209	20-0210	20-0211
Blue/Yellow	20-0308	20-0309	20-0310	20-0311
Red/Yellow	20-0408	20-0409	20-0410	20-0411
Red/Yellow/Black	20-0508	20-0509	20-0510	20-0511
Red/Yellow/Orange	20-1021	20-1022	20-1023	20-1024

YOUTH SUPERFOX GLOVES: \$19.95

	S (5)	M (6)	L (7)
Red/Yellow	20-1105	20-1106	20-1107
Blue/Yellow	20-1205	20-1206	20-1207



SUPERFOX PANTS



YOKO SUPERFOX PANTS

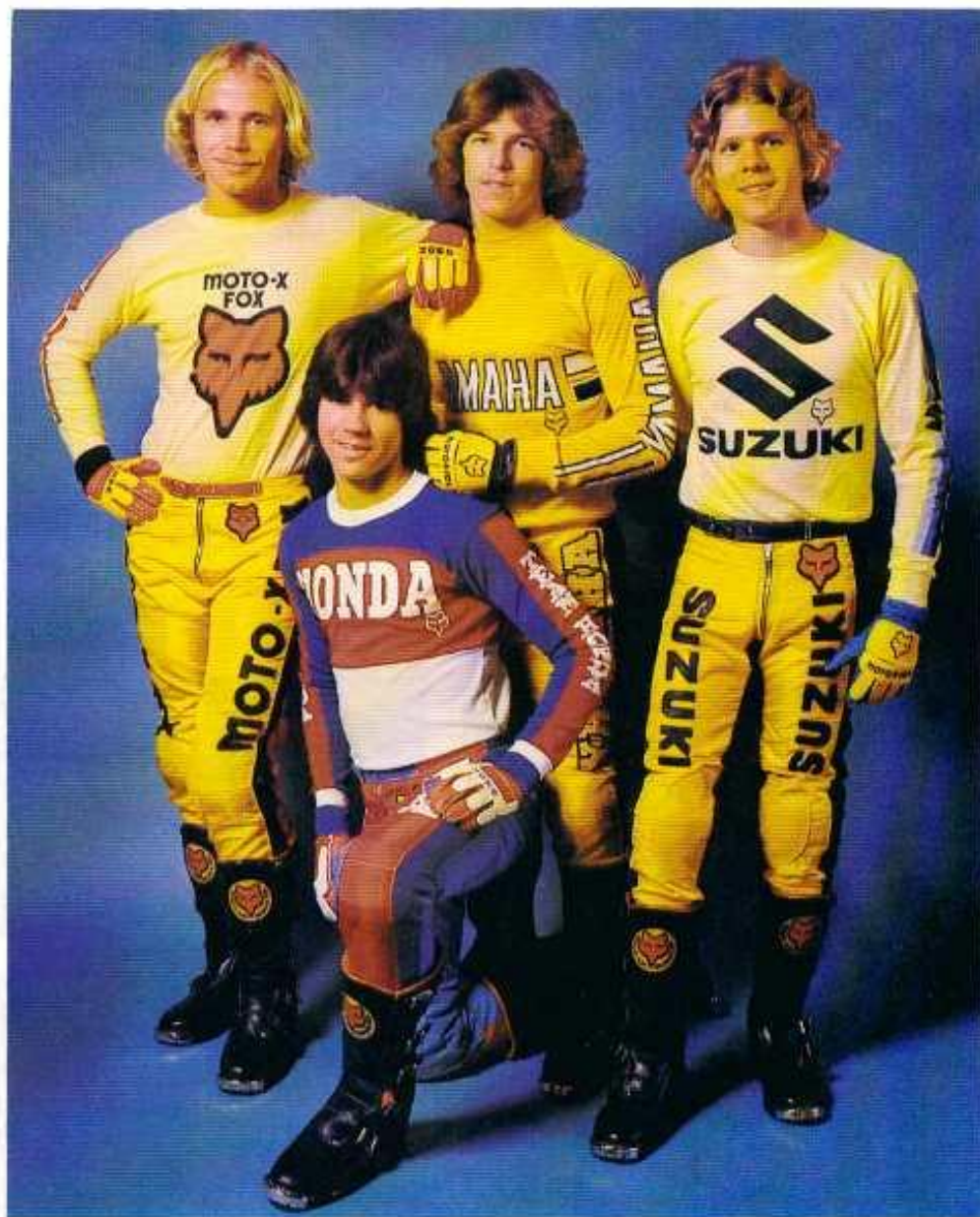
YOKO of Finland has broken the price barrier with these great new YOKO/FOX SUPERFOX pants that are available at a price everyone can afford. Already the top riders are making the switch to these new SUPERFOX pants because of their added advantage of light weight and good feel.

Like the Grand Prix pants, the SUPERFOX pants use heavy-duty nylon fabric outside with a lightweight nylon liner inside. Leather is used on the knees where wear resistance and bike control is

most important. There is a slip-in plastic knee cup and shin guard for protection. The nicest feature though, is the new expandable seam down the sides for better fit and comfort as you move around on the bike.

CUSTOM LETTERING ON PANTS

We now offer a custom lettering service for our pants. Cost is \$2.00 per letter, and of course all such orders MUST be prepaid. Allow one week for this service and be very specific about what name you want us to sew on the back of your pants. Also be sure you know your size as we cannot offer any credit on names which we have to remove.



SUPERFOX PANTS:

	30"	32"	34"	36"	Price
MOTO-X FOX	25-4012	25-4013	25-4014	25-4015	\$ 85.00
SUZUKI	25-4022	25-4023	25-4024	25-4025	85.00
YAMAHA	25-4032	25-4033	25-4034	25-4035	89.00
HONDA	25-4042	25-4043	25-4044	25-4045	85.00
MAICO	25-4052	25-4053	25-4054	25-4055	85.00
HUSQVARNA	25-4062	25-4063	25-4064	25-4065	79.00
KTM	25-4072	25-4073	25-4074	25-4075	79.00
KAWASAKI	25-4112	25-4113	25-4114	25-4115	89.00
Red/Yellow	25-4082	25-4083	25-4084	25-4085	69.00
Blue/Yellow	25-4092	25-4093	25-4094	25-4095	69.00
Blue/Red	25-4102	25-4103	25-4104	25-4105	69.00



YOUTH SUPERFOX PANTS

	26"	28"	Price
MOTO-X FOX	25-4010	25-4011	\$ 69.95
Red/Yellow	25-4080	25-4081	59.95
Blue/Yellow	25-4090	25-4091	59.95

