

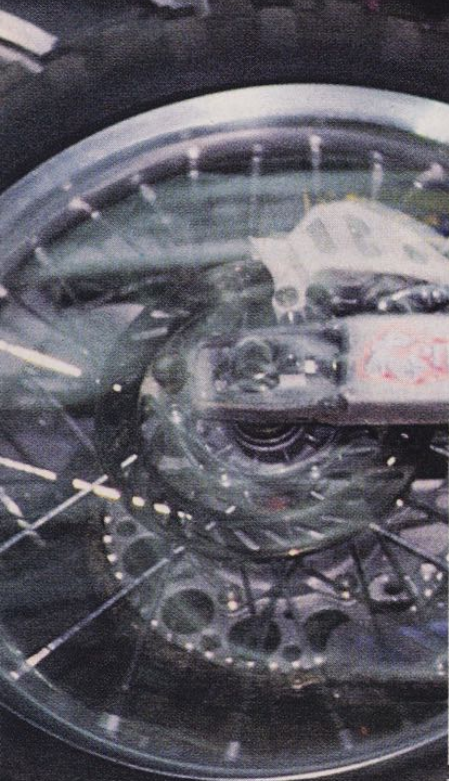
1992  
CATALOG



## SSO PANTS

Include FlexGuard™ knees,  
2-color spandex and  
SSO fabric. These pants  
were the first to incorporate  
I.D. text into the tactel.  
Made in Finland.  
List: \$169.00

JEFF WARD



BLACK/PINK/YELLOW (SIZES 28-38)



ROYAL/BLACK/PINK (SIZES 28-42)

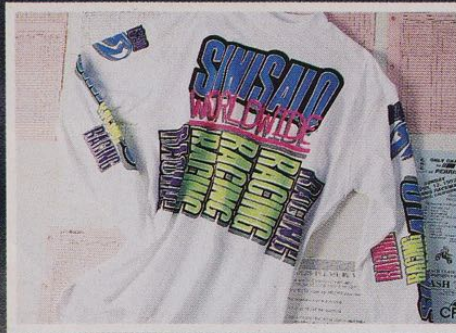




PURPLE/YELLOW/BLUE (SIZES M-XXL)



RED/RED (SIZES M-XXL)



AQUA/GREEN/PINK (SIZES M-XXL)

**SPORT JERSEYS**  
The most jersey for the money!  
100% cotton construction,  
no-stretch ribbing and breathable  
graphics. List: \$25.95



BLUE/BLACK (SIZES M-XXL)

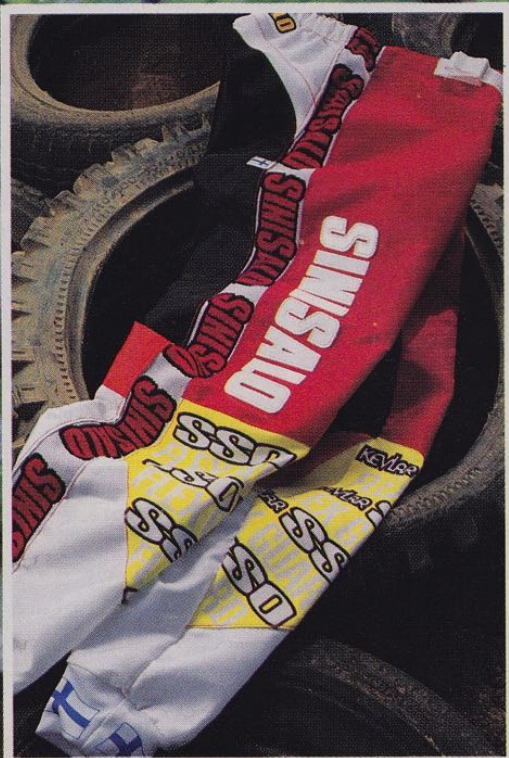


FLOUR. PINK (SIZES M-XXL)

**WARD REPLICA JERSEY**  
Cotton jersey with padded  
elbows, extra long cut in back,  
and Supercross logos.  
List: \$32.95



GREEN/PINK/BLUE/PURPLE (SIZES M-XXL)



RED/BLACK/YELLOW (SIZES 28-42)



PURPLE/BLUE/PINK (SIZES 28-38)

 **MADE IN FINLAND**

US(800)426-0213 CA(805)257-3386

FAX(805)257-3455



REX STATEN

# SCD II PANTS

These pants were the first to use patented BioFoam™ padding on the hips, waist and thighs. Also feature a contoured fit, injection-molded lettering, wide 3-color spandex, Belcord fabric with plush inner lining and Kevlar® knees. Made in Finland. List: \$179.00



BLUE/BLACK (SIZES 28-42)



AQUA/PINK/GREEN (SIZES 28-38)



RED/BLACK (SIZES 28-42)



PINK/YELLOW/AQUA (SIZES 28-38)



FLEXGUARD BIOFOAM™ BELTS  
feature thermalweld graphics and Velcro® straps.  
List: \$39.95. BLUE/BLUE/YELLOW,  
BLACK/PURPLE/ORANGE. One size fits all.

LARRY BROOKS



SSO "SCATTER" PANTS  
have the same features as SSO pants  
but with a new "scatter" design on  
rear section of pants. Made in Finland.  
List: \$179.00



AQUA/SCATTER/PINK (SIZES 28-38)



SCD BELTS include Lycra covered Biofoam™ base protection, plastic inserts, silk-screened graphics and 2-stage Velcro® straps. List: \$44.95. PINK/BLUE, GREEN/BLUE, RED/GREY, BLUE/GREY. Belts fit sizes 28-38.



PURPLE/SCATTER/PINK (SIZES 28-38)

 **MADE IN FINLAND**

US(800)426-0213 CA(805)257-3386  
FAX(805)257-3455



JEFF STANTON



SCD AIR GLOVES feature dual color BioFoam™ padding, die-cut vents, mesh lining, Clarino® palm, Velcro® wrist strap and Kevlar thumb. Made in Finland. List: \$43.95.

FLOUR PINK/YELLOW (SIZES 8-11)



HONDA SCD AIR GLOVES - List: \$43.95. BLUE/BLACK (SIZES 8-11), PINK/PURPLE (SIZES 8-11), RED/BLACK (SIZES 8-11)



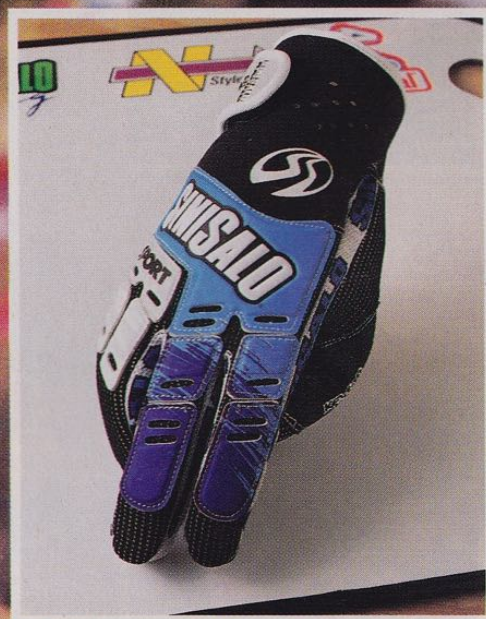
BLUE/BLACK (SIZES 8-12), PINK/BLACK (SIZES 8-11),  
RED/BLACK (SIZES 8-12), GREEN/PINK (SIZES 8-11).

SHAUN KALOS



PINK, GREEN, RED (not shown) (SIZES 8-11).

BLUE (SIZES 8-11)



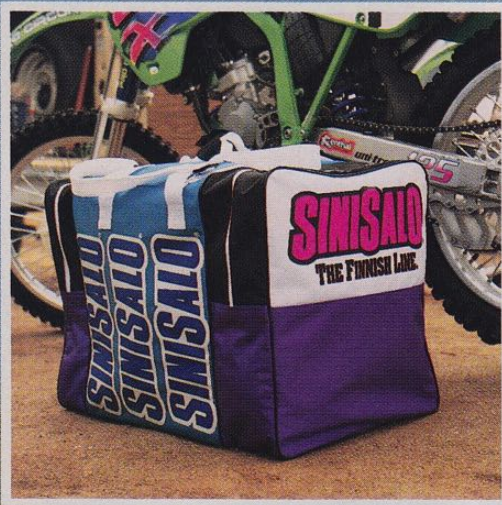
**MADE IN FINLAND**

US (800) 426-0213 CA (805) 257-3386

FAX (805) 257-3455

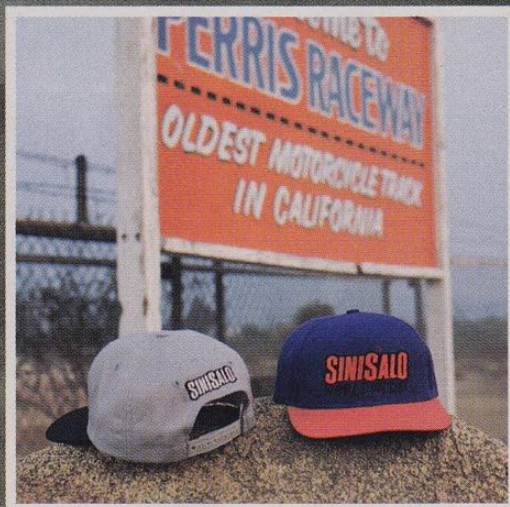
SPORT GLOVES offer comfort, protection, and durability with heavy-duty construction, full-coverage foam padding, synthetic palm and Velero® wrist straps. List: \$34.95.



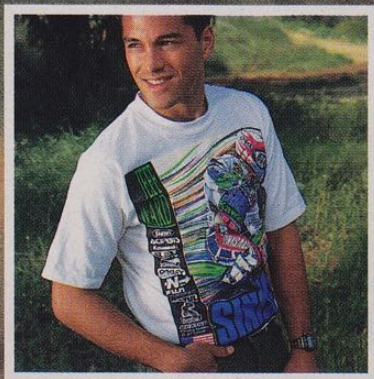


SINISALO GEAR BAGS are perfect for carrying your Sinisalo gear and more. List: \$49.95 (LARGE: 18" X 16" X 23"), List: \$39.95 (SMALL: 18" X 10" X 12").

 **MADE IN FINLAND**



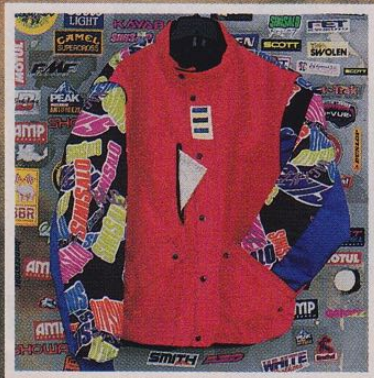
SINISALO HATS are made from a cotton/wool blend featuring stitched logos and adjustable bands. List: \$18.95.



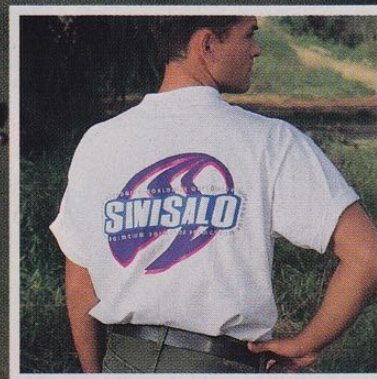
WARDY CHAMPION T-SHIRT has bold and colorful graphics. 100% cotton. List: \$16.95. WHITE (SIZES S-XL).



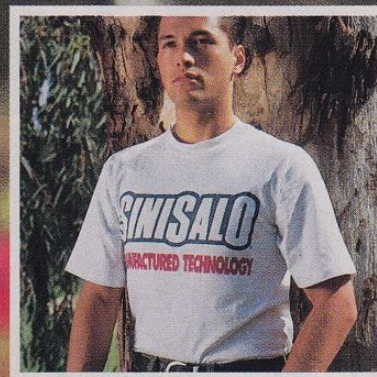
SCD ELBOW GUARDS offer additional protection from impacts and debris. List: \$33.95 pair. RED, BLUE. One Size Fits All.



"SCATTER" JACKETS feature removeable zip-off sleeves, heavy-duty quilted liner, scatter graphics. List: \$149.95. RED/SCATTER/BLUE (SIZES M-XXL).



ROADWAY T-SHIRT is made from comfortable 100% cotton. List: \$15.95. HEATHER (SIZES S-XL).



MANUFACTURED TECHNOLOGY T-SHIRT has 100% comfortable cotton construction. List: \$15.95. HEATHER (SIZES S-XL).



FLEXGUARD JACKETS feature water-resistant Belcord and "FlexGuard" shoulders and forearms with Kevlar.® List: \$184.95. BLUE/PURP/PINK, BLK/RED, BLUE/BLK (M-XXL).

**SINISALO**  
PACIFIC

27811 AVENUE HOPKINS, SUITE 10, VALENCIA, CA 91355  
TO ORDER OR LOCATE A DEALER NEAR YOU, CALL  
US(800)426-0213 CA(805)257-3386  
FAX(805)257-3455

VISA AND MASTERCARD ACCEPTED  
PHOTOGRAPHY BY CAROL HODGE. RACING SHOTS BY KINNEY  
JONES, PAUL BUCKLEY, CHRIS HULTNER AND BRIAN HELLWEG.